

With Lids for Pedestrians, Cars  
or Heavy Goods Vehicles



UNDER SINK



INDOOR BELOW GROUND



INDOOR ABOVE GROUND



OUTDOOR BELOW GROUND



OUTDOOR ABOVE GROUND



## Table of Contents

---

To the Food Operator	4
To the Architect	7
To the Builder	8
Product Features for Flat Top Lids	10
A Legal Requirement	11
Product Features for Recessed Lids	12
A Legal Requirement	13
Correct Sizing	14 & 15
Standard Sizes for Flat Top Lids	16
Non-Standard Sizes	17
Standard Sizes for Recessed Lids	18
Non-Standard Sizes	19
What's Connected to a BIOTRAP®?	20
How the BIOTRAP® Works	21
Daily Bacterial Treatment - Outdoor	22 & 23
Compliance Reporting	24 & 25
Greasetrap with Pedestrian Lid	26 & 27
Greasetrap with Integrated Riser	28 & 29
Greasetrap with Recessed Lid	30 & 31
Greasetrap with Integrated Car Lid	32 & 33
Greasetrap with Independent Car Lid	34 & 35
Greasetrap with Integrated HGV Lid	36 & 37
Greasetrap with Independent HGV Lid	38 & 39
Fat Attack - How it Works	40
Powder Bacteria vs Liquid Bacteria	41
Do I Need a Maintenance Contract?	42
Our Product Range	43
Testimonials	44 & 45
Made-to-Measure Greasetraps	46



## To the Food Operator

### Why do I Need a Greasetrap?

There are two reasons why all Food Service Establishments need a greasetrap:

- It prevents liquid FOG (fats, oils & grease) from entering your plumbing system.
- It is a legal requirement to restrict your FOG from entering the public sewer.

### What to Consider Before Buying?

- Will my greasetrap pass an Irish Water inspection?
- Is it 100% sealed to prevent malodours & leaks?
- Will my staff have to maintain and clean it?
- What is the greasetraps life expectancy?
- What are the maintenance and running costs?

It pays to do some research. Ask other food operators to share their experience and ask your supplier to provide as many references / testimonials as possible. Then, take the time to speak with some of them.

### Why is Correct Sizing Important?

An undersized greasetrap will not separate grease correctly as hot water from appliances will simply wash liquified FOG through the unit where it will later cool and solidify in pipes and drains. Sizing a greasetrap correctly requires a skillful assessment of the food service establishment. Critical information such as water temperature, flow rates, meals served per day and FOG-producing appliances will determine the size of greasetrap that is required. An undersized greasetrap will not comply with waste water regulations which may result in heavy penalties.

### A Taylormade Maintenance Plan

An unmonitored greasetrap is the most expensive piece of equipment in any commercial kitchen. Non compliance penalties aside, call-out fees, downtime, and disruption to business can quickly escalate.

Our SLA (Service Level Agreements) are designed to:

- Reduce operational costs
- Eliminate blockages and bad odours
- Put an end to staff maintenance
- Ensure compliance with all industry regulations

For a fixed monthly fee we will provide:

- Scheduled pump outs at a time that best suits you and your staff.
- Daily bacterial treatment to digest grease and keep your plumbing system free-flowing.
- Supply and install a free-on-loan bacterial dosing pump.
- Maintain all your hard copy compliance records on-site with 24/7 remote access to your on-line Compliance Manual.
- Additional 6 service visits per year to replenish the bacterial treatment, monitor the greasetrap & dosing equipment and maintain your on-site compliance records.
- Unlimited support with applications for an Annual Trade Effluent FOG Licence and regular Irish Water inspections.



*We started our maintenance contract with Taylormade in 2007.  
We wouldn't be without it.*

- Paul Flynn, Celebrity Chef





## To the Architect

### Compliance

I.S. EN 1825 parts 1 & 2 requires all greasetraps to be correctly sized prior to installation. Sizing is based on the nature and quantity of wastewater entering the greasetrap while taking into account the maximum temperature and flow rate, the density of FOG (fats, oil & grease) to be separated and the influence of cleaning / rinsing agents.

Maximum flow rates of wastewater can be determined by the measurement of:

- (1), FOG-producing catering equipment that is discharged into the greasetrap or
- (2), the number of meals being served per day and hours of operation.

### Sizing

Our free online sizing calculator allows specifiers to quickly and easily size a greasetrap in strict compliance with I.S. EN 1825 parts 1 & 2.

- Step 1: Click the **architect support page** on **www.taylormade.ie**.
- Step 2: Choose the sizing method based on "equipment" or "meals per day". Enter the relevant information and click the calculate button. You will be instantly provided with NS (Nominal Size), greasetrap dimensions and product codes.

Alternatively, feel free to contact us. We can assist with every stage of the process from correct sizing and specification to Irish Water approval and installation.

We are happy to discuss your requirements via phone or conference call, at your place of work or at your clients premises.

### Application to Local Authorities

Installing a greasetrap without Local Authority consent could result in heavy fines and costly remediation works. Prior to fabrication, we will correctly size your greasetrap and make an application on behalf of your client. This is a free service.

### Free Site Survey

Call now to book a free survey of your site or premises. Our engineers can assist you with sizing, positioning, design, loading, etc.

### To Consider:

- All greasetraps need to be regularly emptied and cleaned so try to locate the trap within easy reach of a large service vehicle. Ensure there is sufficient head room to remove the access lids.
- If the trap is an underground model you will need to provide us with load-bearing requirements e.g. pedestrian, cars, HGV's.
- The inlet and outlet locations on all our greasetraps can be located to suit existing in-ground or above-ground pipework.
- The unit must be vented to the outside of the building.
- Sewage systems, waste disposal units, macerators, vegetable preparation areas and sluice sinks should not be connected to the greasetrap.
- Allowance should be made for the installation of an automated bacterial dosing unit. The daily treatment should carry a DCC or Irish Water permit number.



*Installing an undersized or unapproved greasetrap can be expensive and disruptive as we may insist on it being replaced.*

- Irish Water Inspector



### Made-to-Measure Greasetraps

Off-the-shelf plastic and metal greasetraps are supplied in standard sizes. But what if the inlet and outlet locations on the greasetraps don't line up with the sewer pipe or waste pipe? What if you need to drive a car or HGV over the lid or if a riser is required due to the increased depth of a sewer pipe? What if a standard size trap is too tall or too wide to work in your particular application? A Taylormade BIOTRAP® addresses all of these issues allowing you the builder to dictate the shape, design, load-bearing capabilities, volume and much more.

### Inlet & Outlet Location

The inlet and outlet locations can be positioned anywhere on the greasetraps. They can even be placed off centre or on the side of the unit.

### Shop Drawings

We provide shop drawings for every standard and non standard greasetraps. This is a free service.

### Lead Time

Our current lead time is 15-20 working days.

### Free Survey

Call now to book a free survey of your site or premises. Our engineers can assist you with sizing, positioning, design, loading, etc.

### Supplied with Lifting Points

Easy lifting and positioning of the greasetraps is achieved using the 4 threaded eye bolts that are secured to the inside of the greasetraps. The weight of the greasetraps is provided with the shop drawings prior to fabrication.

### Increased Load Bearing on Lids

Need to drive or park a car, van or truck on the lids of your new BIOTRAP®? No problem. Load Class B, C and D is easily achieved with our integrated or independent lids (see pages 32 to 39).

### Bespoke Riser

If the existing sewer line is situated more than 250mm below ground level, an integrated riser will be required. This ensures the volume of the greasetraps is not compromised (see page 28 & 29).

### Installation Service

We provide a nationwide installation service which includes excavation and all civil works, mechanical lifting and installation, plumbing and commissioning.



*Taylormade surveyed, measured and fabricated our new greasetraps to perfectly suit the existing pipework at Kylemore Abbey. We are delighted with the service and product.*

*- S & K Carey Building Contractors*



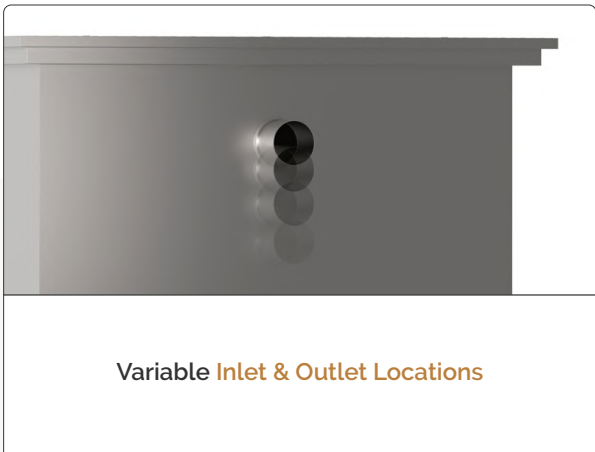
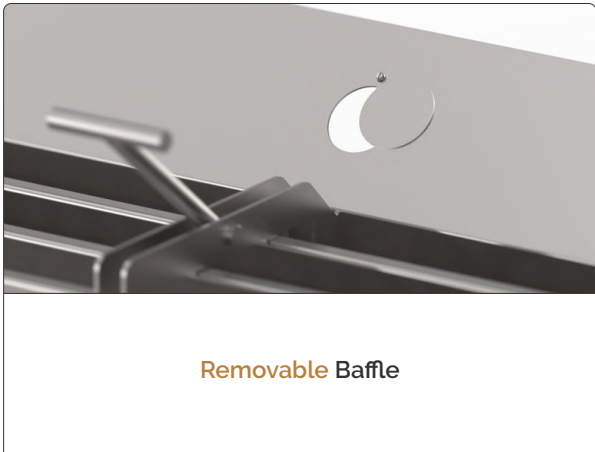
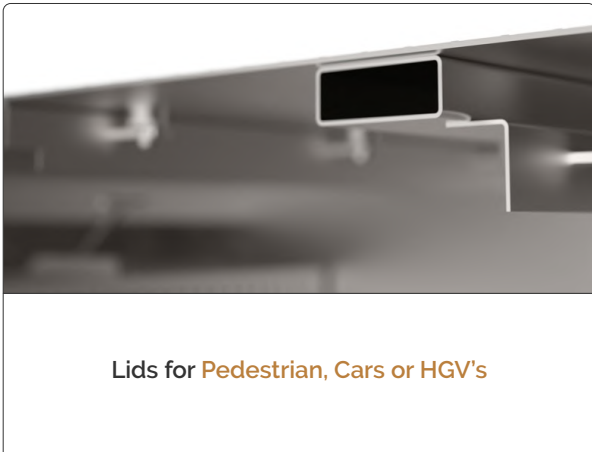


Product Features for Flat Top Lids

Non-slip flat top lids are made from 304 grade stainless steel and are secured to the base unit with M20 threaded bolts.

The compression seals ensure a 100% airtight seal so they are perfectly suited for outdoor (under-ground) dining locations or areas of high foot traffic such as forecourts, picnic spaces, car parks, footpaths etc.

Standard flat top lids will accommodate pedestrian traffic or light goods trolleys and pallet trucks. HGV and car lids are also available (see pages 32 to 39). The lids are easily removed to provide unrestricted access to all areas of the greasetrap. This ensures the unit can be thoroughly cleaned and washed down in compliance with I.S. EN 1825 parts 1 & 2. The OBG range is available in standard and non-standard sizes from Ns1 to NS50 (see pages 16 & 17).

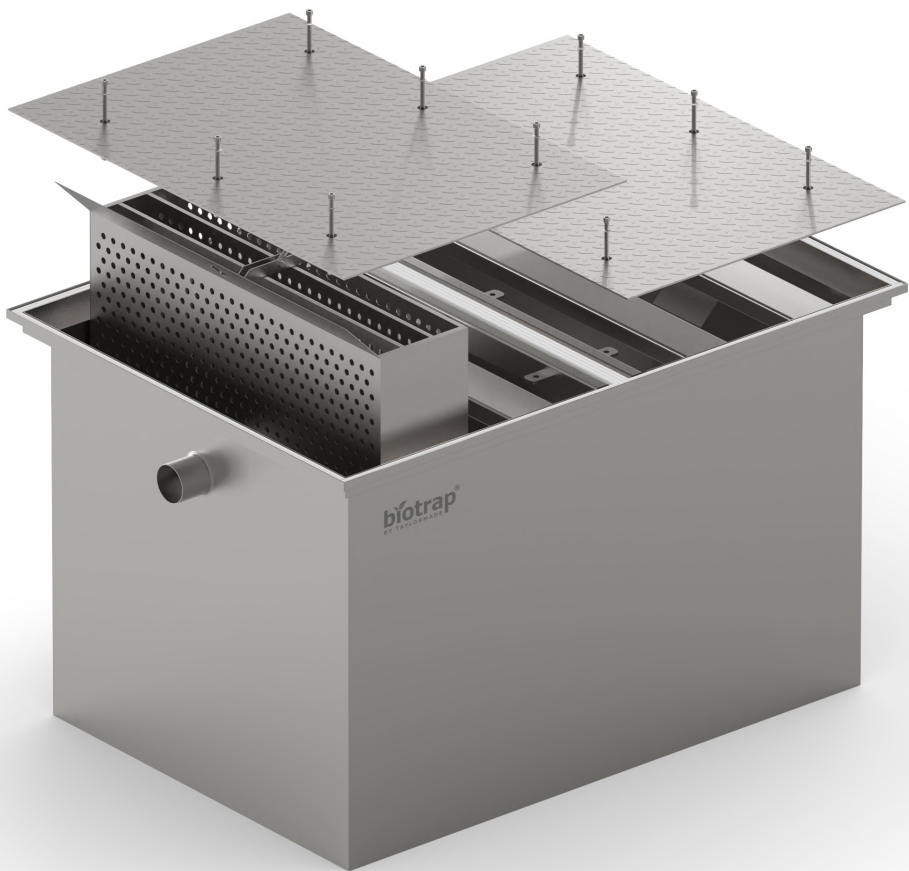


A Legal Requirement

If you prepare food for staff or serve food to the public, you have a legal obligation to:

- Install a correctly sized NSAI approved greasetrap.
- Maintain the greasetrap in accordance with I.S. EN 1825 parts 1 & 2.
- Apply for an annual Trade Effluent Licence.

Food Operators are required to provide Irish Water with sizing and design details before installing or replacing a greasetrap. Prior to fabrication and installation, we submit a detailed application to Irish Water on your behalf. This is a free service. Greasetraps manufactured outside of Ireland that do not carry the relevant NSAI or CE certification are not permitted.



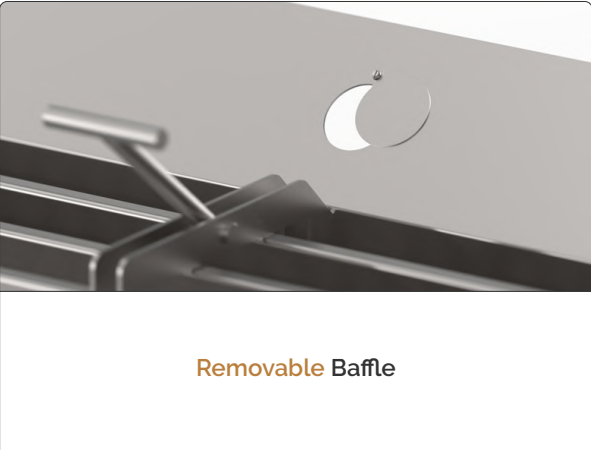


# Product Features for Recessed Lids

**Recessed lids** are the ideal way to minimise the visual impact of a greasetrap in an area of high foot traffic or where a continuous tarmac, concrete, cobble-lock or tile effect needs to be achieved. Each lid is secured to the base unit with x4 threaded bolts which are located in each corner. The compression seals ensure a 100% airtight seal so they are perfectly suited for any outdoor (under-ground) location.



As with **Flat Top Lids**, the recessed lid will accommodate pedestrian traffic or light goods trolleys and pallet trucks. HGV and car lids are also available. The lid design ensures the unit can be thoroughly cleaned and washed down in compliance with I.S. EN 1825 parts 1 & 2. The sizing chart is on pages 18 & 19.

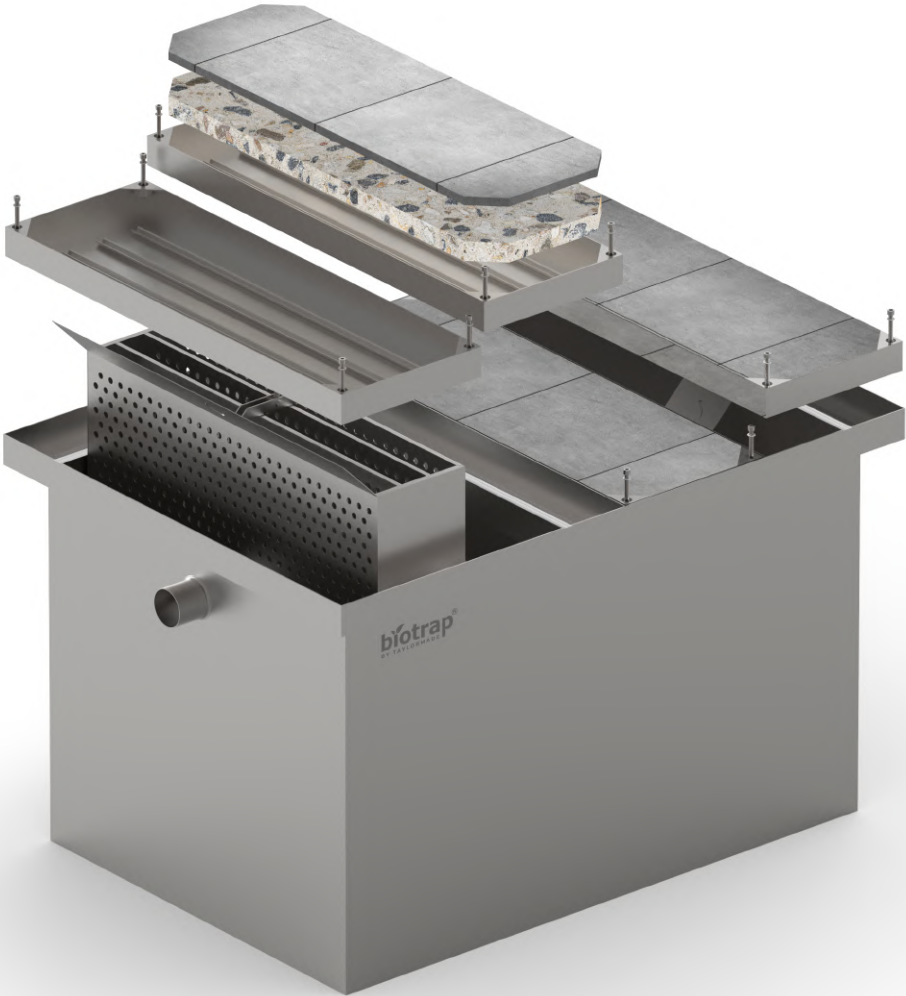


# A Legal Requirement

If you prepare food for staff or serve food to the public, you have a legal obligation to:

- Install a correctly sized NSAI approved greasetrap.
- Maintain the greasetrap in accordance with I.S. EN 1825 parts 1 & 2.
- Apply for an annual Trade Effluent Licence.

Food Operators are required to provide Irish Water with sizing and design details before installing or replacing a greasetrap. Prior to fabrication and installation, we submit a detailed application to Irish Water on your behalf. This is a free service. Greasetraps manufactured outside of Ireland that do not carry the relevant NSAI or CE certification are not permitted.





# Correct Sizing

## Why is Correct Sizing Important?

An undersized greasetrap will not separate grease correctly as hot water from appliances will simply wash liquified FOG through the unit where it will later cool and solidify in pipes and drains.

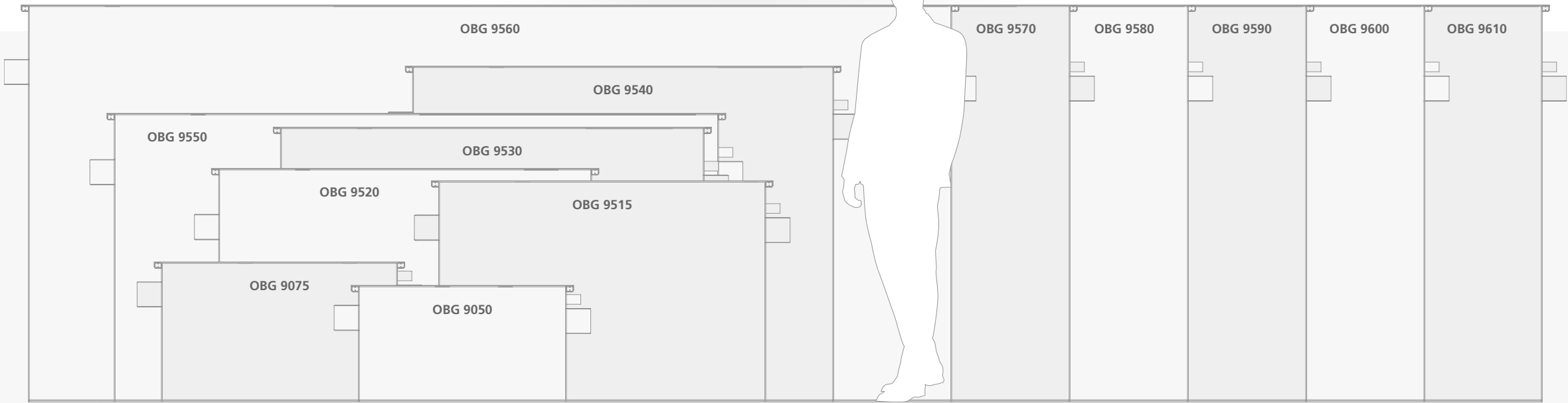
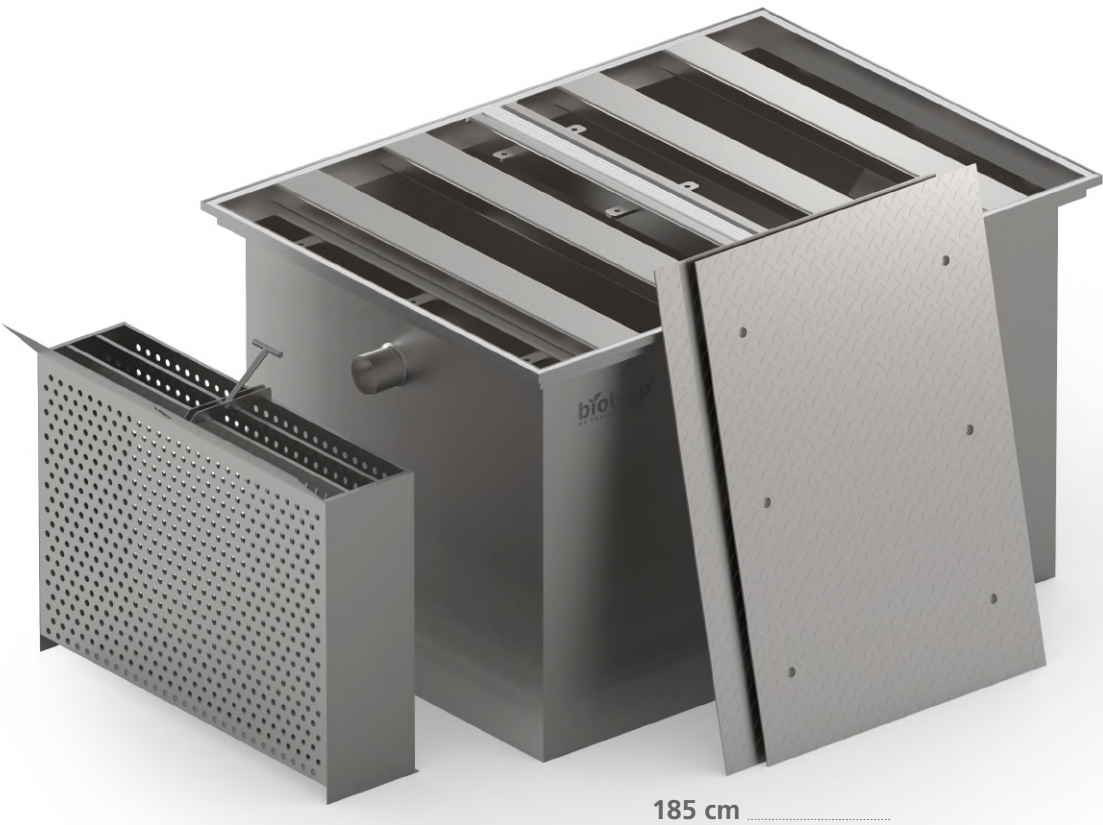
Sizing a greasetrap correctly requires a skillful assessment of the food service establishment. Critical information such as water temperature, flow rates, meals served per day and FOG-producing appliances will determine the size of greasetrap that is required.

An undersized greasetrap will not comply with waste water regulations which may result in heavy penalties.

## Non-Compliant Greasetraps

An average commercial sink holds up to 70 litres of water but most under-sink electric and passive greasetraps have a maximum capacity of 25 - 50 litres. Therefore, FOG (fats, oils & grease) cannot be successfully separated if large volumes of warm or hot water simply wash through the greasetrap.

Greasetraps manufactured outside of Ireland that do not carry the relevant NSAI or CE certifications are not permitted.



## How can I Correctly Size a Greasetrap?

As a Local Authority and Irish Water approved supplier we will provide a sizing calculation in accordance with I.S. EN 1825 Parts 1 & 2.

This is an important document as Irish Water inspectors will ask to see it during their routine inspections. An accurate sizing calculation cannot be provided without a detailed survey of the premises or a correct understanding of the current waste water regulations.

## Free Site Survey

We provide a free nationwide site survey for:

- Food Operators
- Builders / Contractors
- Architects / Engineers

## Free Sizing Calculator

Accurate sizing is critical when making a submission to Irish Water. Our free sizing calculator can provide correct sizing based on the FOG (fats, oils & grease) producing equipment that is currently in use.

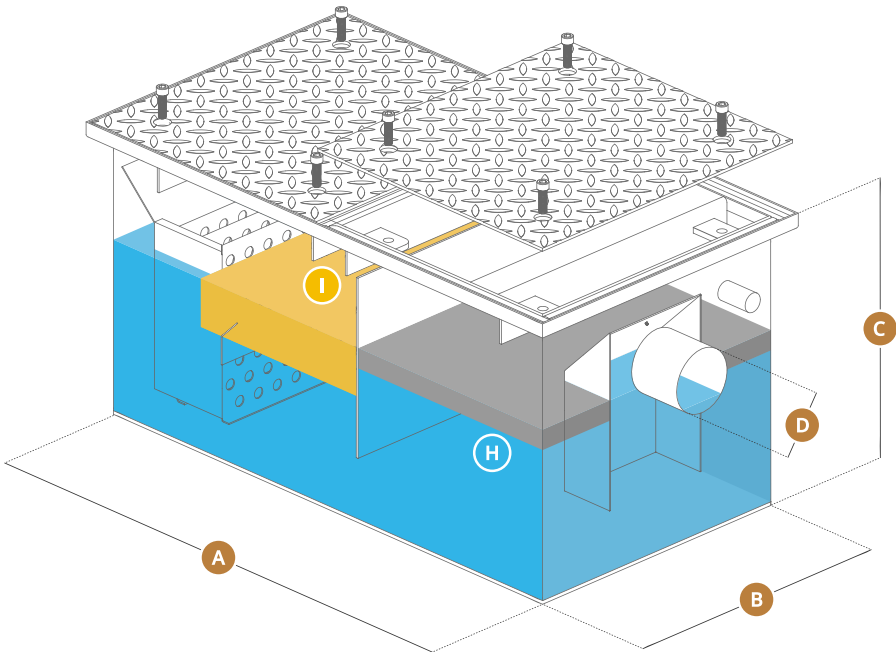
Access our sizing calculator here:  
[www.grease-trap.ie/grease-traps/architect-support/](http://www.grease-trap.ie/grease-traps/architect-support/)



Standard Sizes for Flat Top Lids

The sizing chart below provides the dimensions for our OBG (Outdoor Below Ground) range of greasetraps with Flat Top Lids. Current production time is 15 to 20 working days.

\*The D dimension (pipe diameter) can be adjusted to accommodate any size or make of pipework.



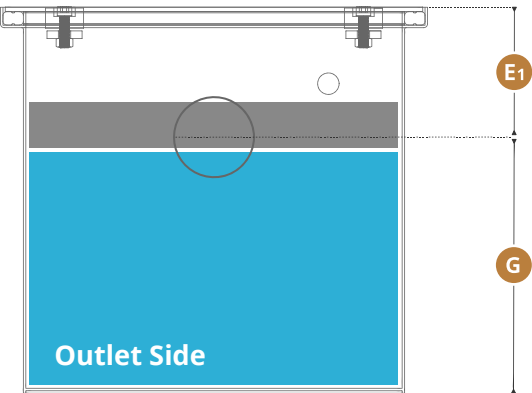
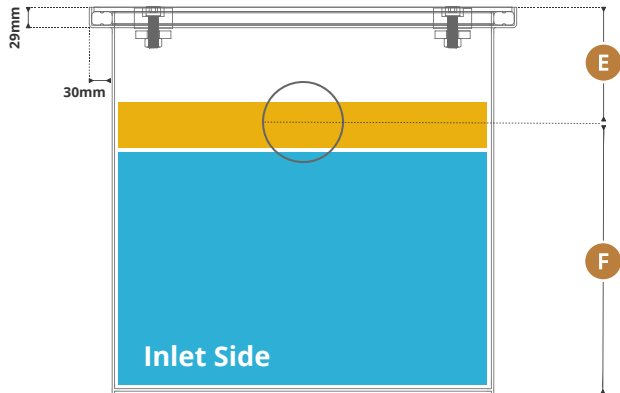
An **integrated riser** (see page 28) or an **integrated load-bearing lid** for cars or HGV's (see pages 32 & 36) can be requested. In addition an **independent load-bearing lid** for cars or HGV's (see pages 34 & 38) can be supplied separately.

Non-Standard Sizes

We specialise in non-standard sizes and we can fabricate a BIOTRAP® to suit almost any application.

Complete the form on page 46 or call us on 0818 336633 to book a free on-site consultation with one of our engineers.

For locations with limited headroom or restricted space we can fabricate a custom-built greasetrap in several sections which are then welded together in situ and dye tested for water tightness.



BIOTRAP® Code	Nominal Size	A	B	C	D	E	E1	F	G	H	I	Total Capacity	Number of Lids	Greasetrap Weight
		Length	Width	Height	Pipe Diameter	Inlet to Lid	Outlet to Lid	Inlet to Floor	Outlet to Floor	Sludge Trap	Grease Capacity			
BIOTRAP-OBG-9050	NS1	924	624	496	Bespoke*	140	150	356	346	100 L	40 L	199 L	1	115 Kg
BIOTRAP-OBG-9075	NS2	1024	724	606	Bespoke*	140	150	466	456	200 L	80 L	338 L	1	154 Kg
BIOTRAP-OBG-9515	NS4	1416	996	960	Bespoke*	203	213	757	747	400 L	160 L	1054 L	2	320 Kg
BIOTRAP-OBG-9520	NS7	1616	1116	1011	Bespoke*	254	264	757	747	700 L	280 L	1345 L	2	390 Kg
BIOTRAP-OBG-9530	NS10	1836	1296	1190	Bespoke*	254	264	936	926	1000 L	400 L	2203 L	2	628 Kg
BIOTRAP-OBG-9540	NS15	1824	1328	1454	Bespoke*	254	264	1200	1190	1500 L	600 L	2883 L	2	702 Kg
BIOTRAP-OBG-9550	NS20	2618	1616	1250	Bespoke*	254	264	996	986	2000 L	800 L	4171 L	3	1230 Kg
BIOTRAP-OBG-9560	NS25	4000	1500	1720	Bespoke*	290	360	1430	1360	2520 L	1008 L	8568 L	3	1980 Kg
BIOTRAP-OBG-9570	NS30	4000	1900	1720	Bespoke*	290	360	1430	1360	3040 L	1216 L	10336 L	4	2160 Kg
BIOTRAP-OBG-9580	NS35	4400	2000	1720	Bespoke*	290	360	1430	1360	3520 L	1408 L	11968 L	4	2468 Kg
BIOTRAP-OBG-9590	NS40	5000	2000	1720	Bespoke*	290	360	1430	1360	4000 L	1600 L	13600 L	5	2786 Kg
BIOTRAP-OBG-9600	NS45	5650	2000	1720	Bespoke*	290	360	1430	1360	4520 L	1808 L	15368 L	6	3124 Kg
BIOTRAP-OBG-9610	NS50	6250	2000	1720	Bespoke*	290	360	1430	1360	5000 L	2000 L	17000 L	6	3436 Kg

\*Pipe diameter can be 40mm, 50mm, 110mm, 160mm, 220mm or 254mm.

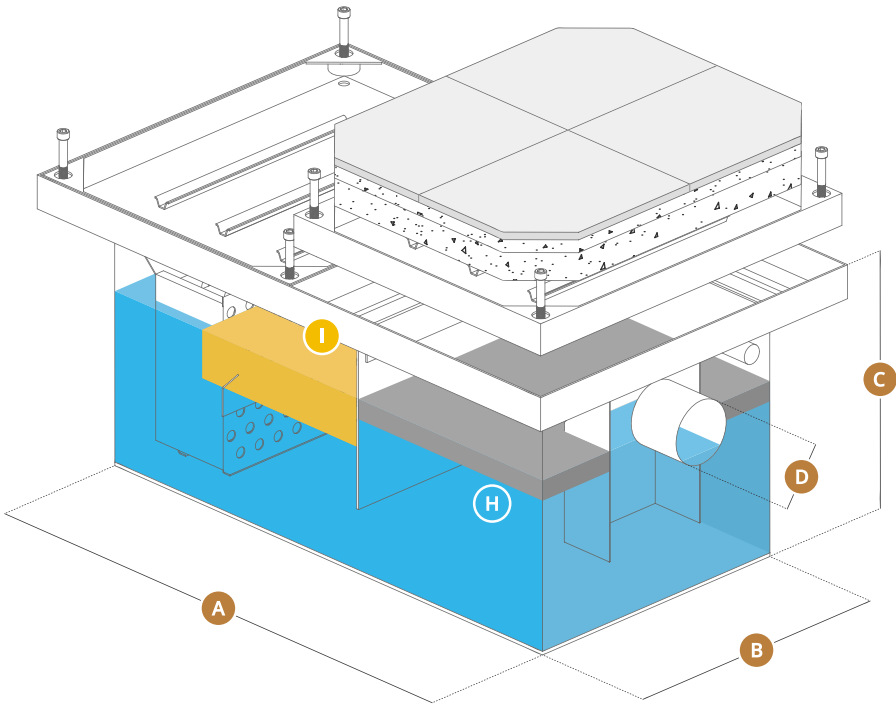


Standard Sizes for Recessed Lids

The sizing chart below provides the dimensions for our OBG(R) (Outdoor Below Ground) range of greasetraps with Recessed Lids. Current production time is 15 to 20 working days.

\*The D dimension (pipe diameter) can be adjusted to accommodate any size or make of pipework.

An **integrated riser** (see page 28) or an **integrated load-bearing lid** for cars or HGV's (see pages 32 & 36) can be requested. In addition an **independent load-bearing lid** for cars or HGV's (see pages 34 & 38) can be supplied separately.

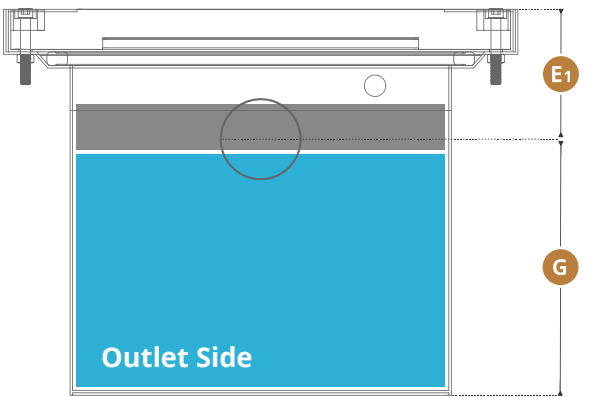
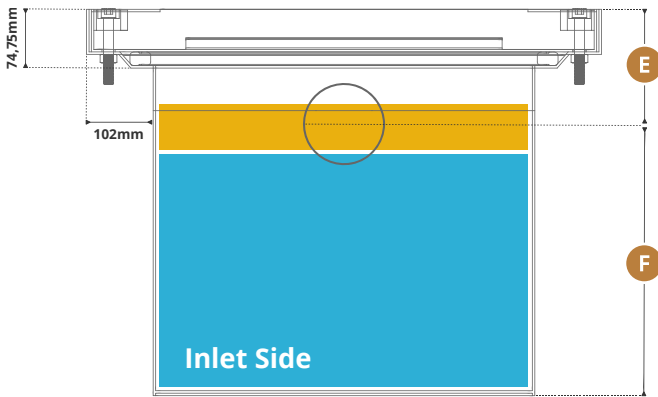


Non-Standard Sizes

We specialise in non-standard sizes and we can fabricate a BIOTRAP® to suit almost any application.

Complete the form on page 46 or call us on 0818 336633 to book a free on-site consultation with one of our engineers.

For locations with limited headroom or restricted space we can fabricate a custom-built greasetrapp in several sections which are then welded together in situ and dye tested for water tightness.

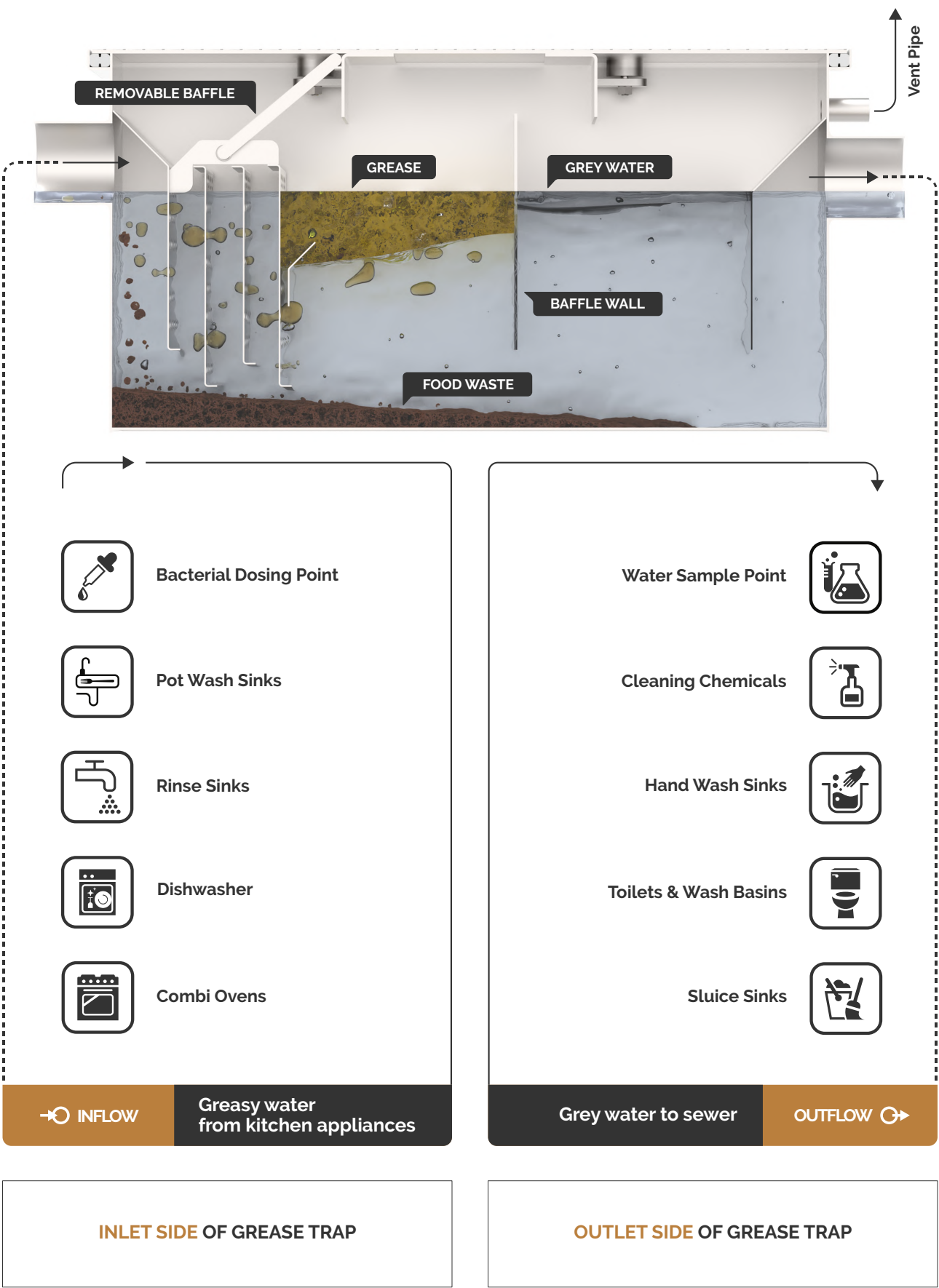


BIOTRAP® Code	Nominal Size	A	B	C	D	E	E1	F	G	H	I	Total Capacity	Number of Lids	Lid Weight	Greasetrapp Weight
		Length	Width	Height	Pipe Diameter	Inlet to Lid	Outlet to Lid	Inlet to Floor	Outlet to Floor	Sludge Trap	Grease Capacity				
BIOTRAP-OBG(R)9050	NS1	924	624	596	Bespoke*	240	250	356	346	100 L	40 L	199 L	1	139 Kg	115 Kg
BIOTRAP-OBG(R)9075	NS2	1024	724	706	Bespoke*	240	250	466	456	200 L	80 L	338 L	2	85 Kg	154 Kg
BIOTRAP-OBG(R)9515	NS4	1416	996	1060	Bespoke*	303	313	757	747	400 L	160 L	1054 L	2	144 Kg	320 Kg
BIOTRAP-OBG(R)9520	NS7	1616	1116	1111	Bespoke*	354	364	757	747	700 L	280 L	1345 L	3	118 Kg	390 Kg
BIOTRAP-OBG(R)9530	NS10	1836	1296	1290	Bespoke*	354	364	936	926	1000 L	400 L	2203 L	3	150 Kg	628 Kg
BIOTRAP-OBG(R)9540	NS15	1824	1328	1554	Bespoke*	354	364	1200	1190	1500 L	600 L	2883 L	5	92 Kg	702 Kg
BIOTRAP-OBG(R)9550	NS20	2618	1616	1350	Bespoke*	354	364	996	986	2000 L	800 L	4171 L	5	150 Kg	1230 Kg

\*Pipe diameter can be 40mm, 50mm, 110mm, 160mm, 220mm or 254mm.



What's Connected to a BIOTRAP®?



How the BIOTRAP® Works

As wastewater enters the BIOTRAP®, the internal stainless steel baffles reduce the flow allowing the water to cool quickly. FOG (fats, oils & grease) then rise to the surface while food particles sink to the bottom.

Our Irish Water approved bacterial treatment is automatically dosed into the plumbing system and greasetrap via a timed digital dosing pump. Note: the use of enzymatic treatments are banned in Ireland.

The micro-organisms in FAT ATTACK® break down FOG (fats, oils & grease) and digest all solid waste on contact which keeps the BIOTRAP® as well as drains and pipes free-flowing and functioning like new.

There are no moving parts, filters or bags to replace. BIOTRAP® requires no daily maintenance by staff, consumes zero electricity, and can be retrofitted in almost any kitchen. With a 25+ year life expectancy and a 100% airtight design, BIOTRAP® is the most hygienic and cost-effective interceptor on the market.

The Benefits

- Zero Staff Maintenance
- Zero Smells or Leaks
- Zero Electricity Costs
- 25 Year Life Expectancy
- Optional SLA (Service Level Agreement)
- Unlimited Support

Just Ask Our Customers

We manufacture, install and maintain passive grease traps for many of Irelands leading food operators. We are happy to provide contact details for any of our clients featured in the testimonial section on our website: [www.taylormade.ie](http://www.taylormade.ie)



DCC PERMIT  
PC0010905Bl2

Bacterial Treatment

A daily bacterial treatment program is not a legal requirement but it is recommended for busy food outlets as it eliminates blockages and bad odours in plumbing systems and greasetraps.

[www.grease-trap.ie/drain-treatments-blocked-drains](http://www.grease-trap.ie/drain-treatments-blocked-drains)

Bacterial treatments reduce the frequency of costly greasetrap cleaning.



Certified Waste  
Disposal

Scheduled Maintenance

In strict compliance with I.S. EN 1825 parts 1 & 2, a Taylormade Service Level Agreement (SLA) includes:

- Certified Waste Disposal & Cleaning
- Daily Bacterial Treatment
- Bi Monthly Inspections & Monitoring
- Compliance Reporting
- Routine Maintenance



Water Sample  
Testing

Water Sample Testing

As part of our SLA (Service Level Agreement) we can test the waste water leaving the BIOTRAP®.

Parameters include: FOG, COB, BOD, suspended solids, pH levels, total phosphorus, detergents and temperature.



## Daily **Bacterial Treatment** - Outdoor

### Do I Need to **Treat my Greasetrap**?

Treating your drains and greasetrap with a bacterial additive is not a legal requirement. However, extensive independant studies have shown that approved and licenced treatments significantly reduce the buildup of FOG (fats, oils & grease) in pipes, drains and grease traps. This in turn reduces the frequency of expensive cleaning which justifies the cost of treatment.

### Can I Treat the Greasetrap **Myself**?

Yes. Our bacterial treatments are safe to handle and environmentally friendly. They can be hand dosed into a sink at regular intervals but they are most effective when allowed to sit in an idle plumbing system for up to 4 hours each day e.g. last thing at night. Automated dosing via a digital peristaltic pump is recommended as it eliminates human error and ensures consistent, accurate and timed dosing each day.

### Do All **Drain Treatments** Work?

No. The use of **enzymatic** drain treatments are banned in Ireland. Studies show that these additives temporarily suspend and liquify FOG (fats, oils & grease) which later solidify further down the line to cause blockages.

Our bacterial drain treatments are Local Authority and Irish Water approved. We supply and install a free-on-loan dosing pump for all our SLA (Service Level Agreement) customers.

### How Does the **Bacterial Treatment** Work?

Simply put, approved bacterial treatments digest grease and other organic waste to prevent FOG (fats, oils & grease) from blocking plumbing systems and greasetraps.





## Compliance Reporting

### MACS® Compliance Reporting

Under Section 16 (1) of the Public Health Act, it is an offence for food operators to allow waste FOG (fats, oils & grease) to enter a public drain or sewer. The food operator is subject to criminal liability if they cannot demonstrate compliance with the conditions of their Discharge Licence. Irish Water inspectors require the licensee to regularly monitor, maintain and document the compliance performance of each greasetrap on their premises.

For busy food service establishments, greasetrap compliance can be a time-consuming and challenging responsibility.

### What is MACS®?

MACS® is a unique database that is updated monthly or bimonthly by your service engineer and provides food operators and Irish Water inspectors with remote access to all of your grease trap maintenance & compliance records. Hard copy records are produced each month (or bimonthly) by your service engineer and stored in your water-resistant Compliance Manual. In addition, your monthly or bimonthly maintenance and compliance reports are emailed to you and your designated staff.

### Benefits

- Waste Disposal Certificates
- FOG, BOD, COD, pH levels etc.
- Maintenance Reporting
- Staff Training Records
- Annual Environment Reports
- Discharge Licensing
- Irish Water Inspections
- Performance Reporting
- Reactive Maintenance





# Greasetrap with Pedestrian Lid

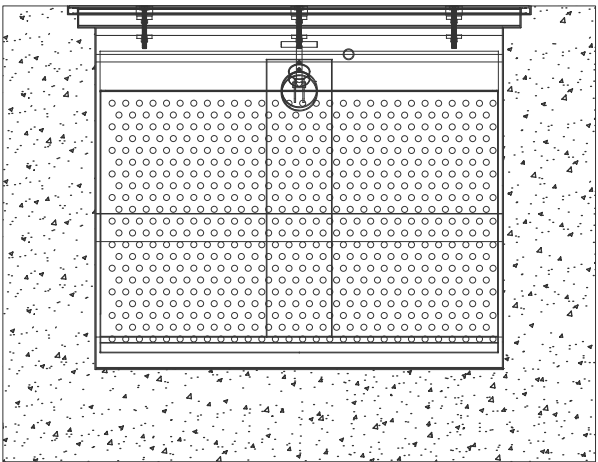


# Technical Drawings

## Standard Sizes

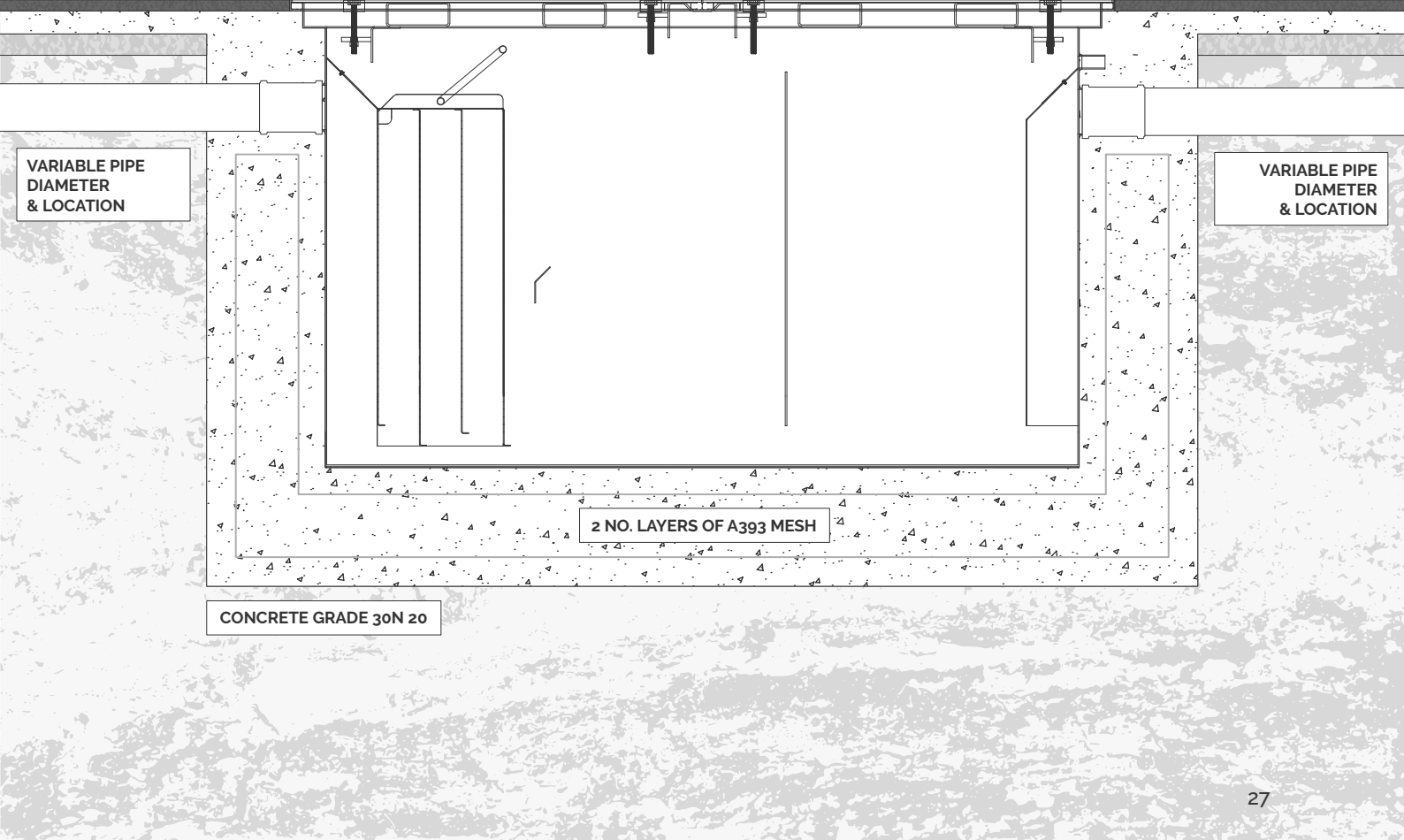
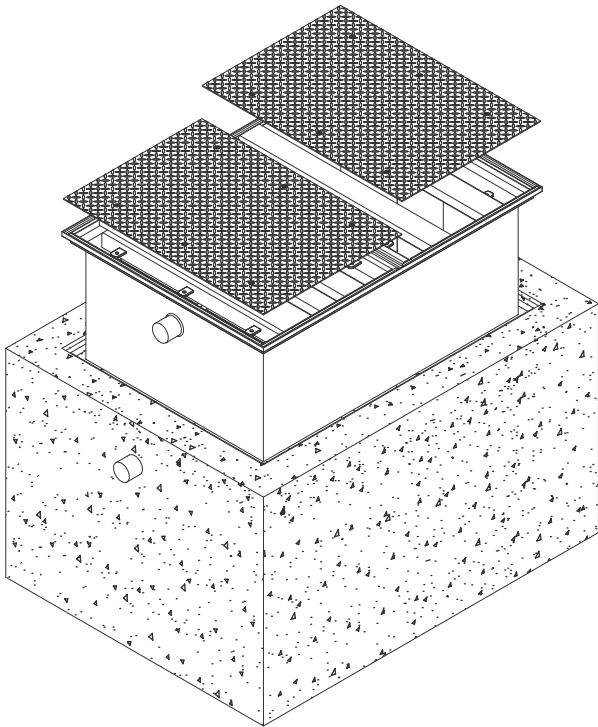
The sizing chart on page 16 - 19 provides the dimensions for our standard range of Outdoor Below Ground greasetraps with Flat Top Lids or Recessed Lids. Inlet and outlet locations can be positioned anywhere on the unit.

Current production time is 15 to 20 working days.



## Non-Standard Sizes

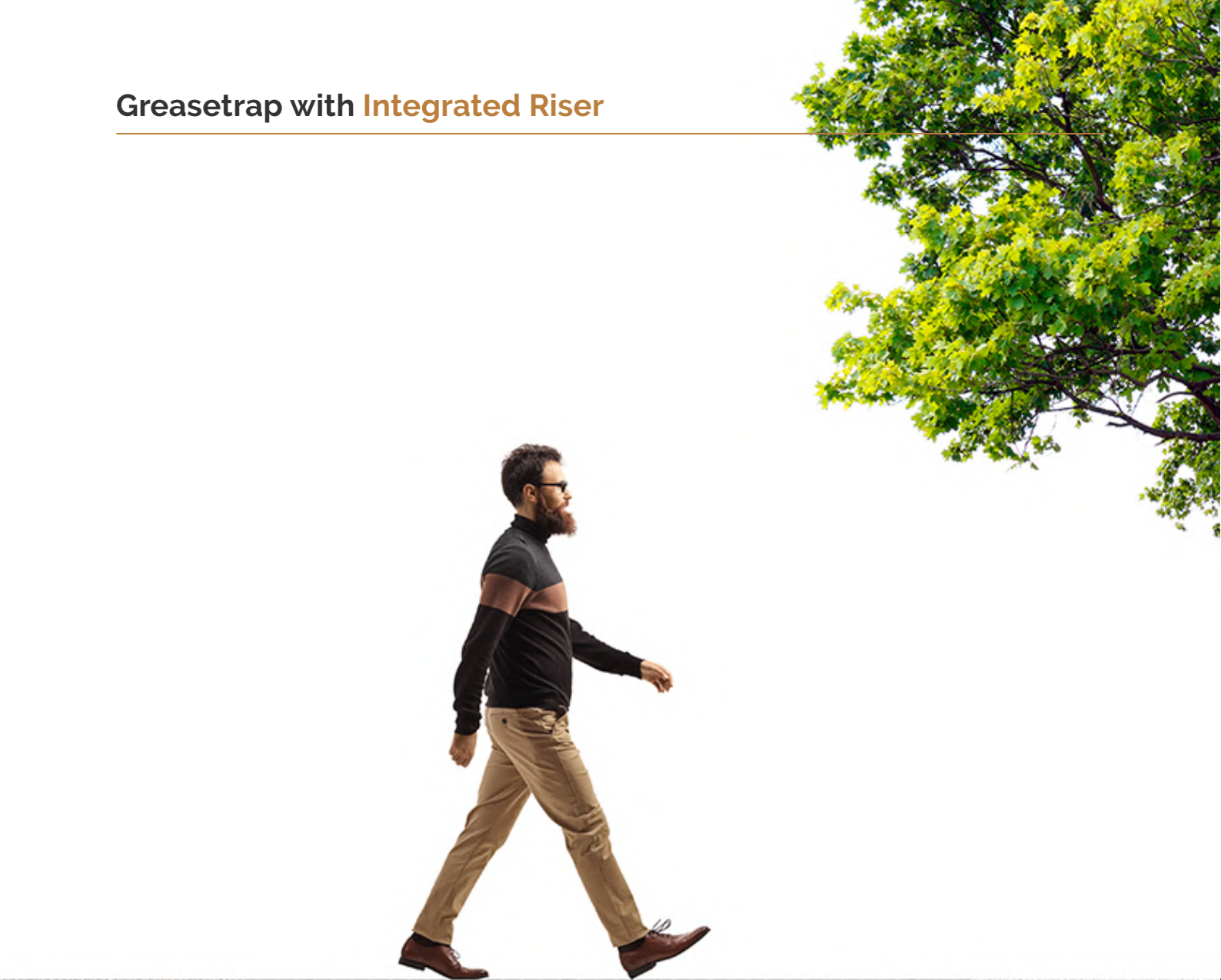
We can fabricate a BIOTRAP® to suit almost any application. Complete the form on page 46 or call us on 0818 336633 to book a free on site consultation with one of our engineers.



Illustrated above is the OBG-9530 with load class B lid for pedestrians.



Greasetrap with **Integrated Riser**

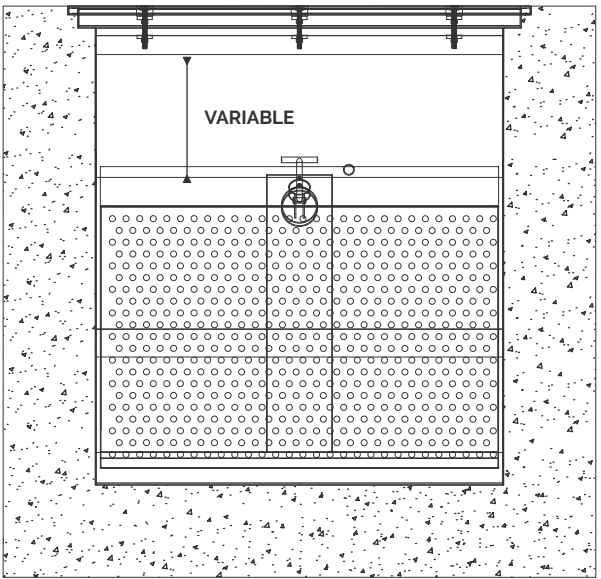


Illustrated above is the OBG-9530 with a made to measure integrated riser (to suit existing pipework) and load class B lid for pedestrians.

Technical **Drawings**

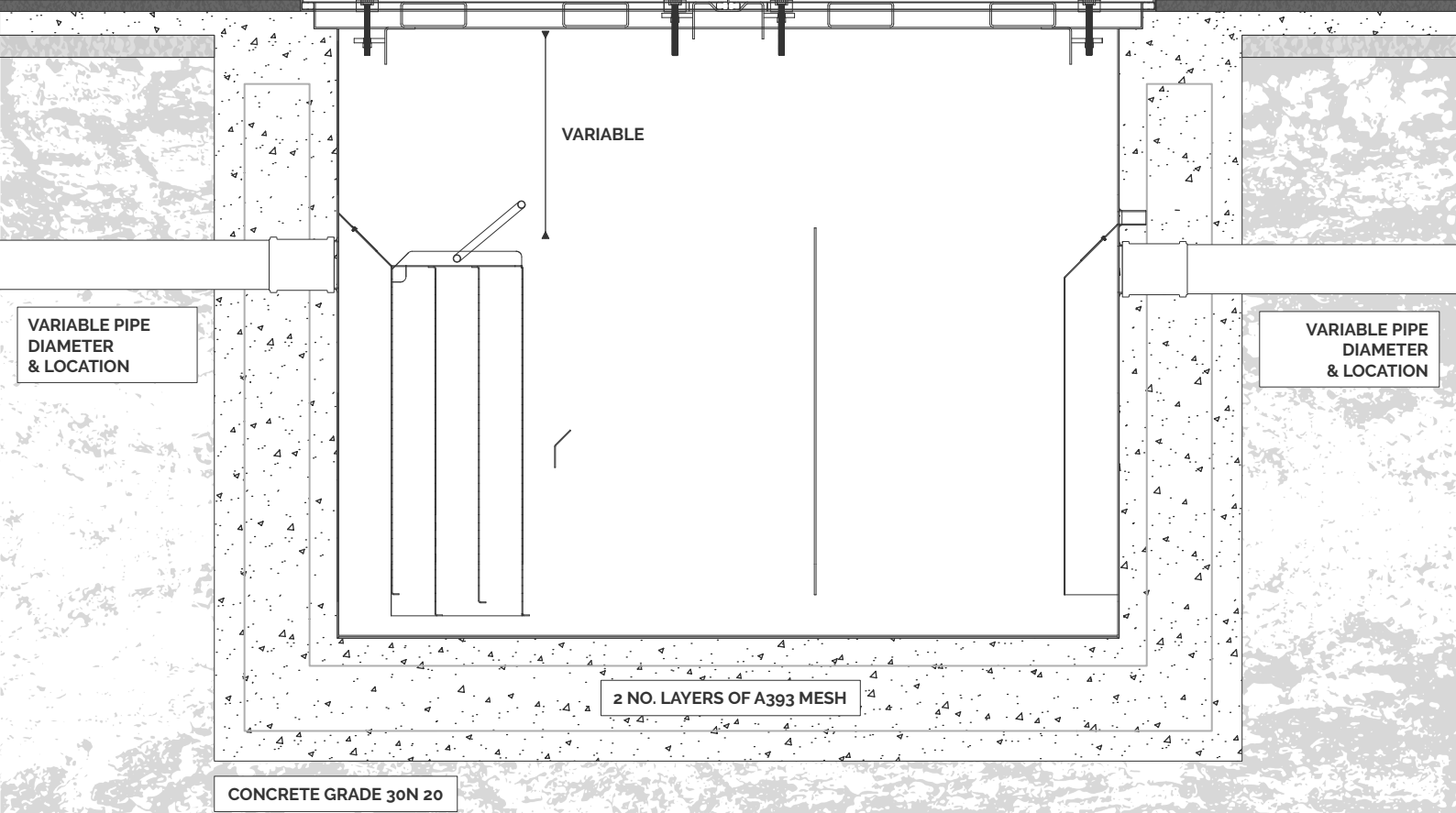
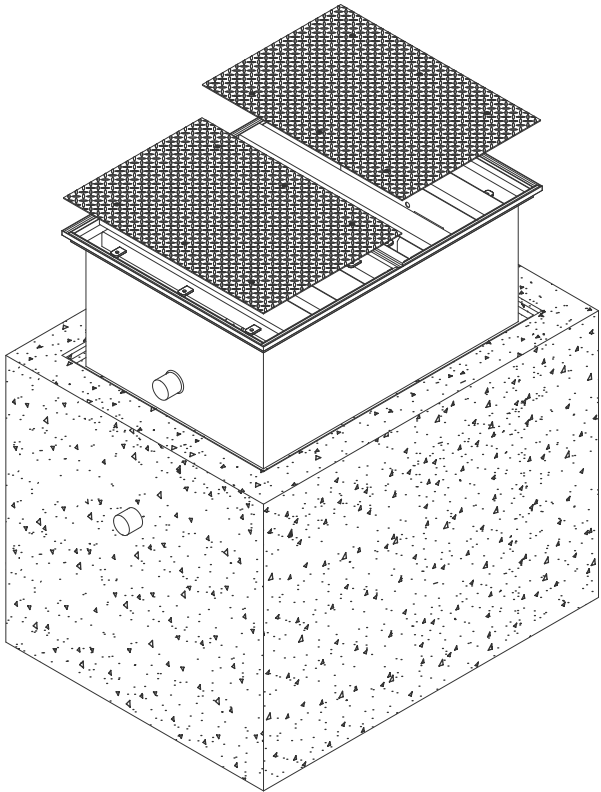
**Standard Sizes**

The sizing chart on page 16 - 19 provides the dimensions for our standard range of Outdoor Below Ground greasetraps with Flat Top Lids or Recessed Lids. Inlet and outlet locations can be positioned anywhere on the unit.  
Current production time is 15 to 20 working days.



**Non-Standard Sizes**

Complete the form on page 46 or call us on 0818 336633 to book a free on site consultation with one of our engineers.





# Greasetrap with Recessed Lid

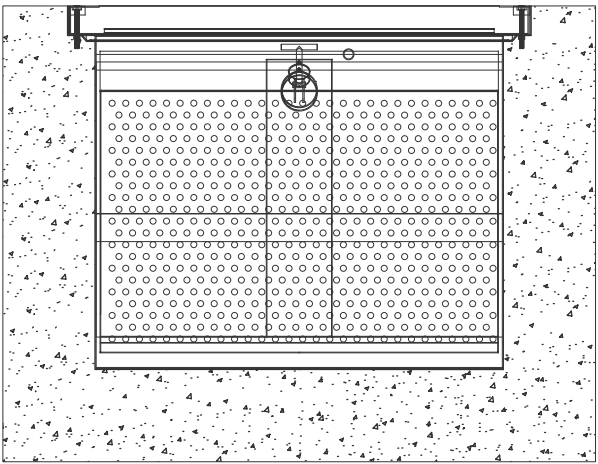


# Technical Drawings

## Standard Sizes

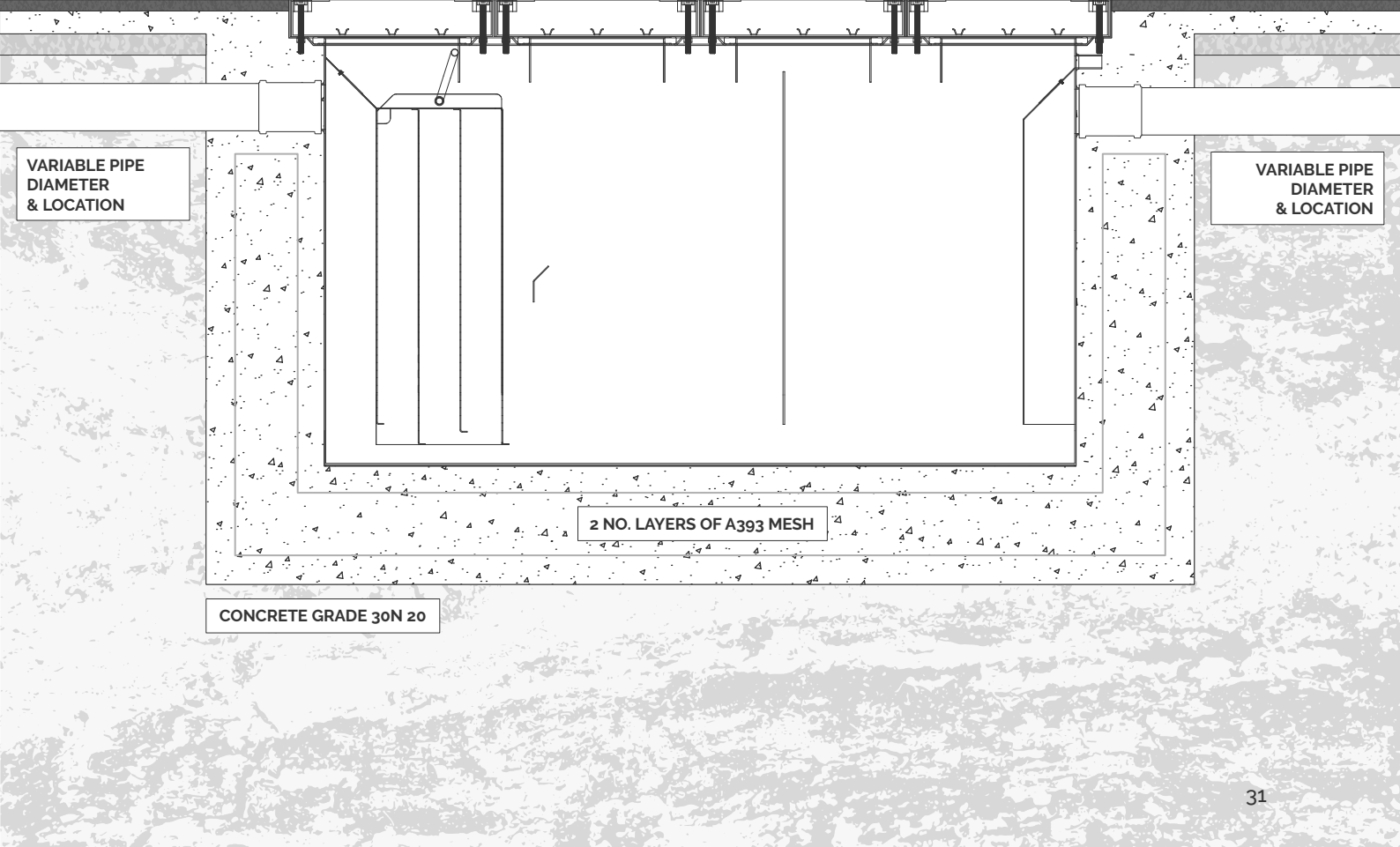
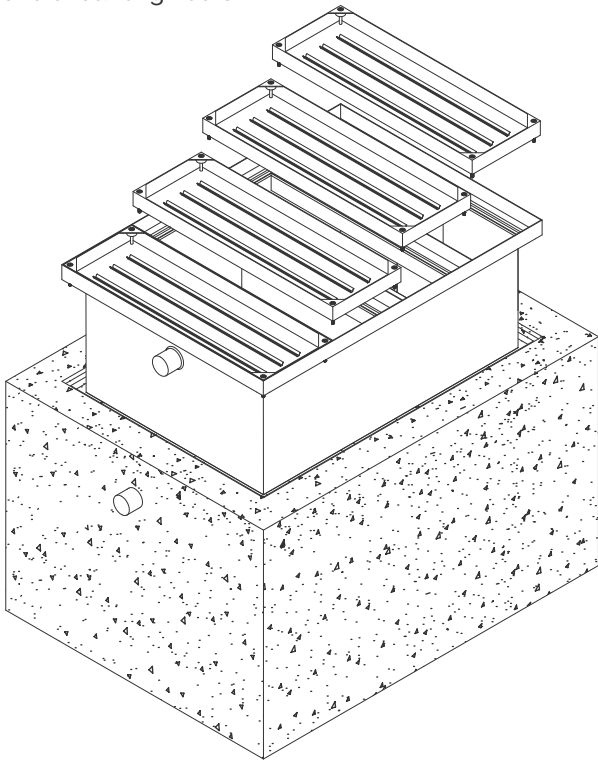
The sizing chart on page 16 - 19 provides the dimensions for our standard range of Outdoor Below Ground greasetraps with Flat Top Lids or Recessed Lids. Inlet and outlet locations can be positioned anywhere on the unit.

Current production time is 15 to 20 working days.



## Non-Standard Sizes

We can fabricate a BIOTRAP® to suit almost any application. Complete the form on page 46 or call us on 0818 336633 to book a free on site consultation with one of our engineers.



Illustrated above is the OBG(R)9530 with recessed lid to accept concrete, asphalt, paving slabs etc.



Greasetrap with **Integrated Car Lid**

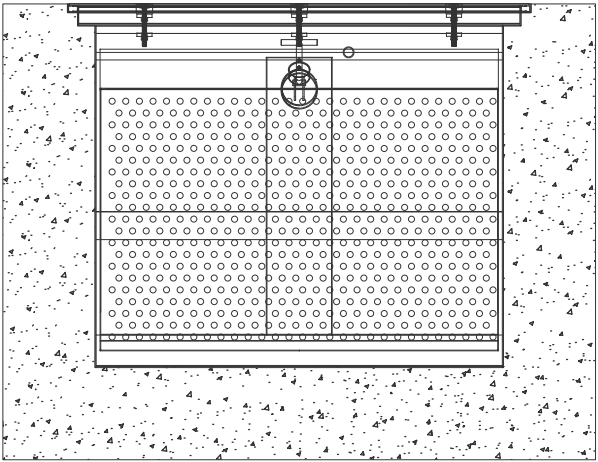


Illustrated above is the OBG-9530 with an integrated load class C lid for cars and vans.

Technical **Drawings**

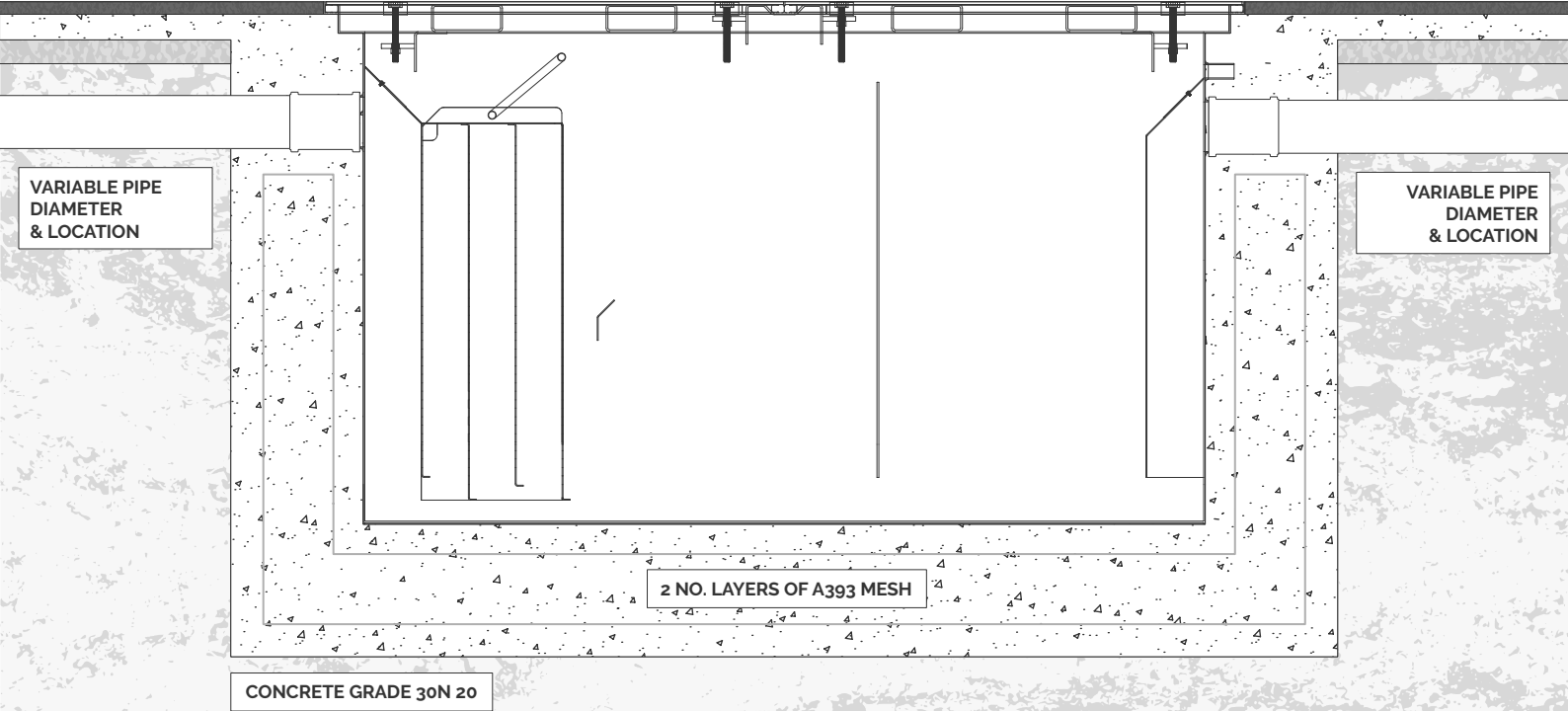
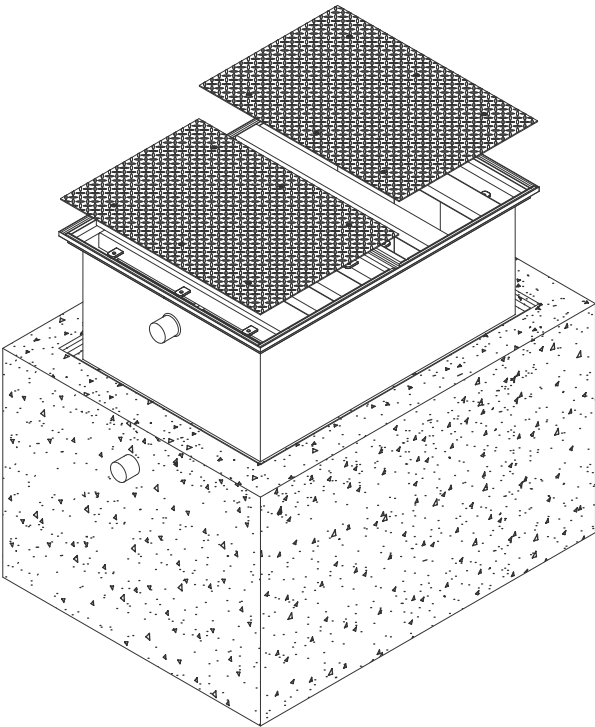
**Standard Sizes**

The sizing chart on page 16 - 19 provides the dimensions for our standard range of Outdoor Below Ground greasetraps with Flat Top Lids or Recessed Lids. Inlet and outlet locations can be positioned anywhere on the unit.  
Current production time is 15 to 20 working days.



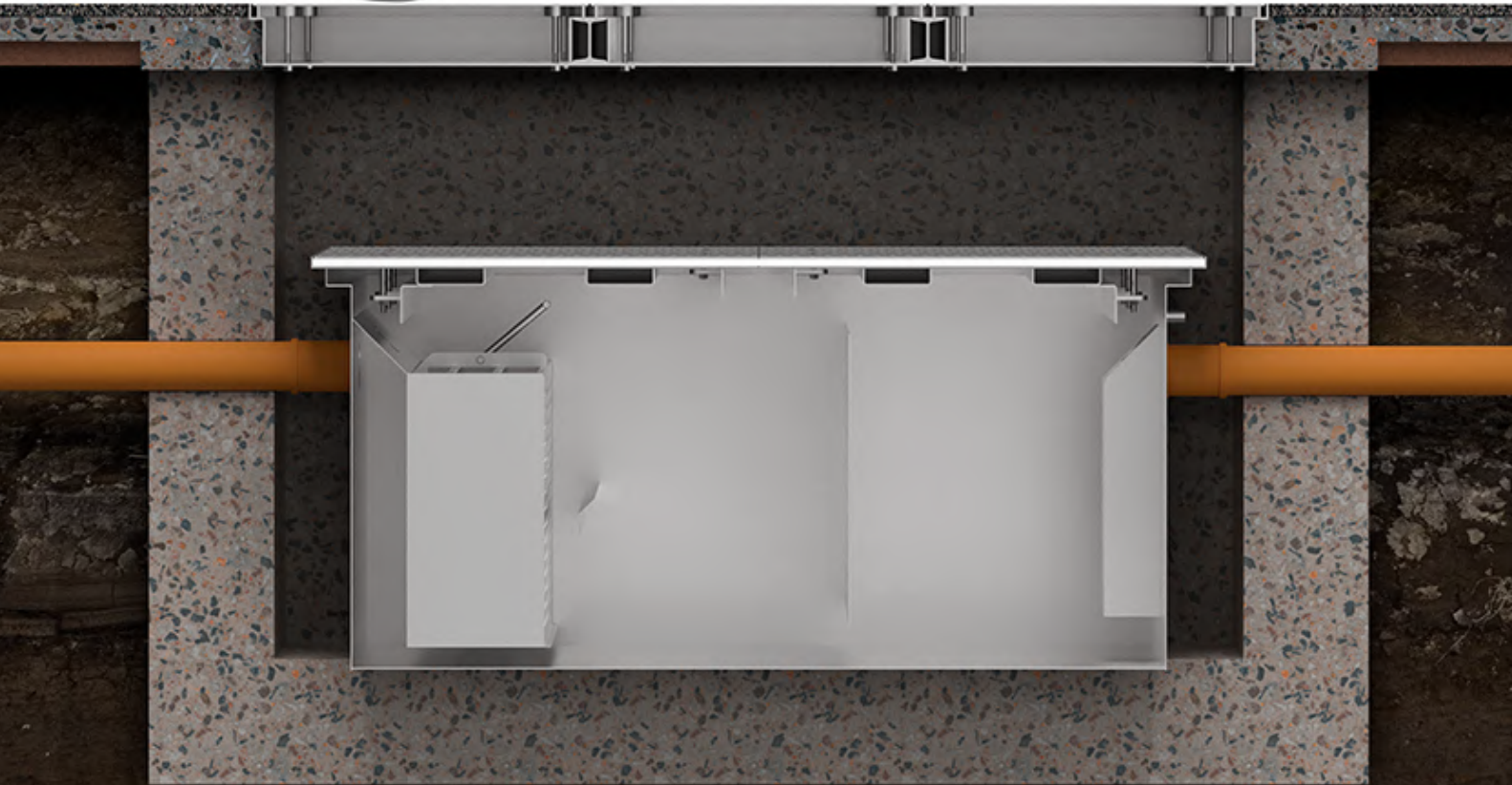
**Non-Standard Sizes**

We can fabricate a BIOTRAP® to suit almost any application. Complete the form on page 46 or call us on 0818 336633 to book a free on site consultation with one of our engineers.





Greasetrap with Independent Car Lid

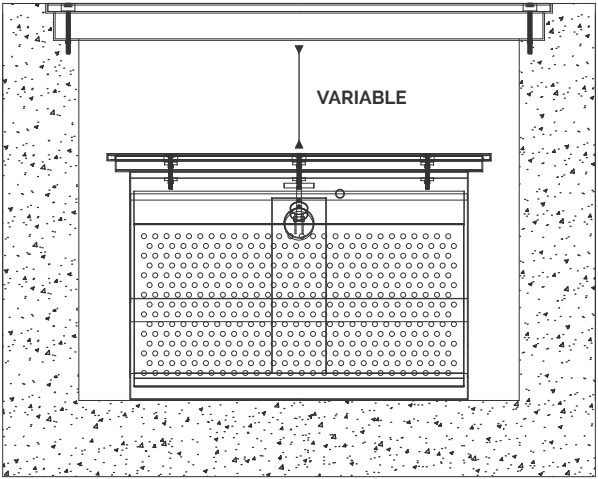


Illustrated above is the OBG-9530 with an independent load class C lid for cars & vans.

Technical Drawings

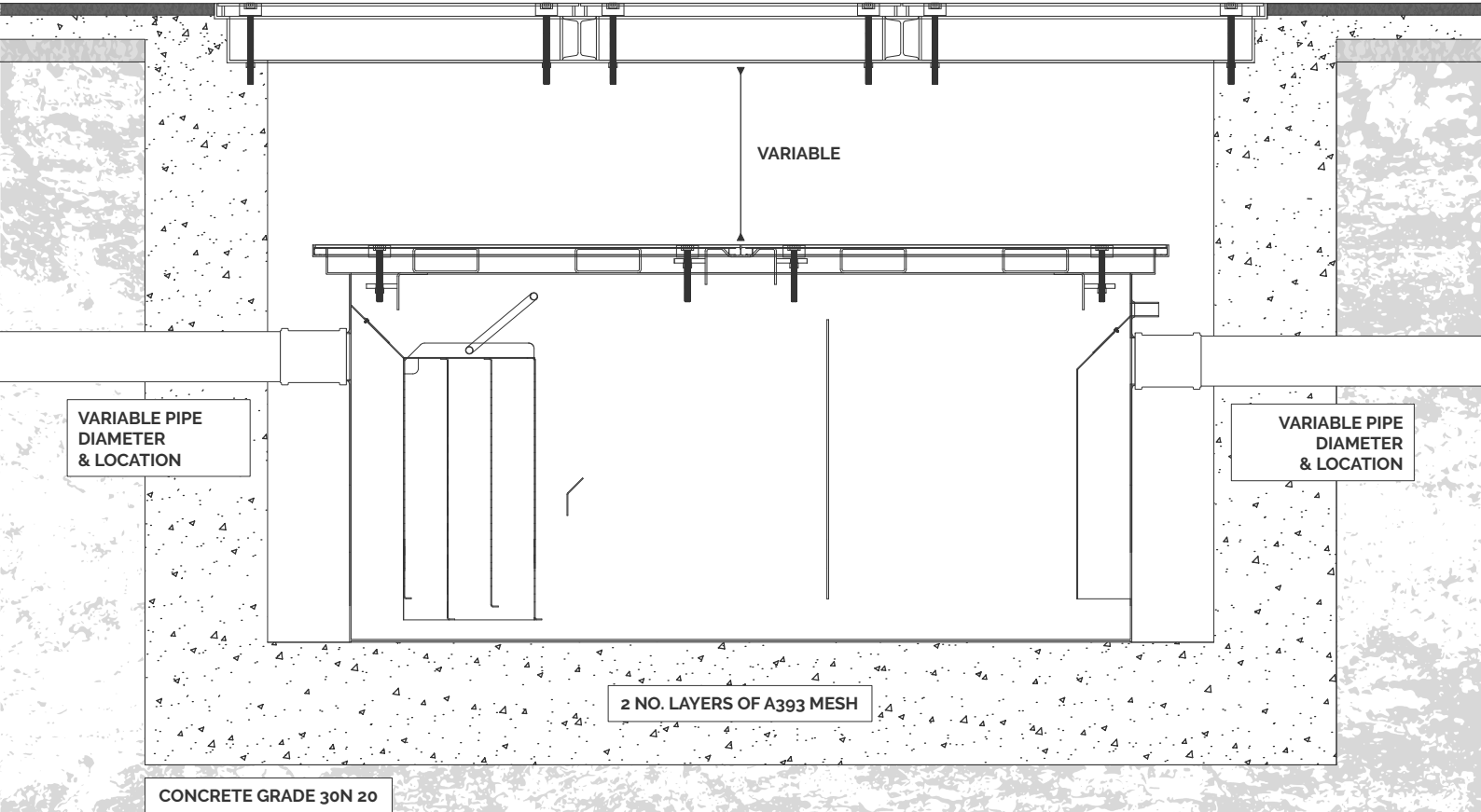
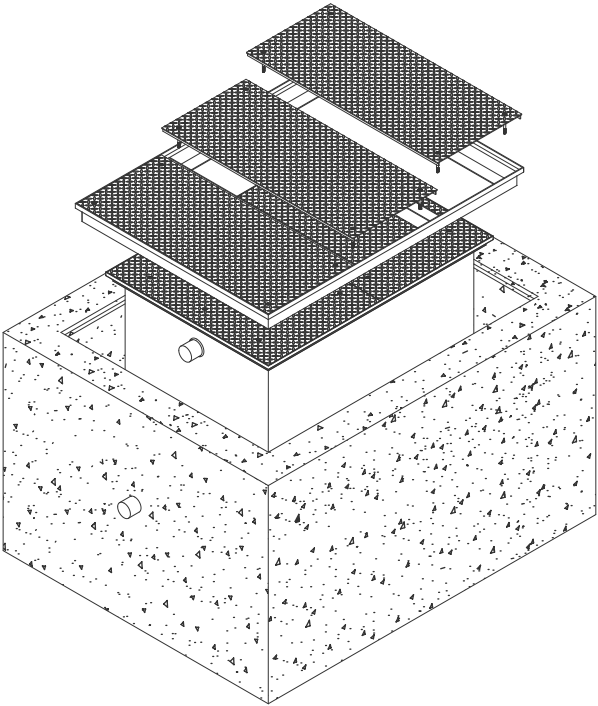
Standard Sizes

The sizing chart on page 16 - 19 provides the dimensions for our standard range of Outdoor Below Ground greasetraps with Flat Top Lids or Recessed Lids. Inlet and outlet locations can be positioned anywhere on the unit.  
Current production time is 15 to 20 working days.



Non-Standard Sizes

Complete the form on page 46 or call us on 0818 336633 to book a free on site consultation with one of our engineers.





Greasetrap with **Integrated HGV Lid**



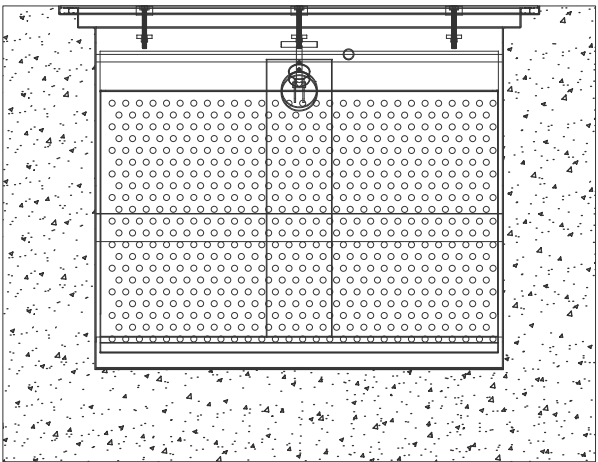
Illustrated above is the OBG-9530 with an integrated load class D lid for HGV's.

Technical **Drawings**

**Standard Sizes**

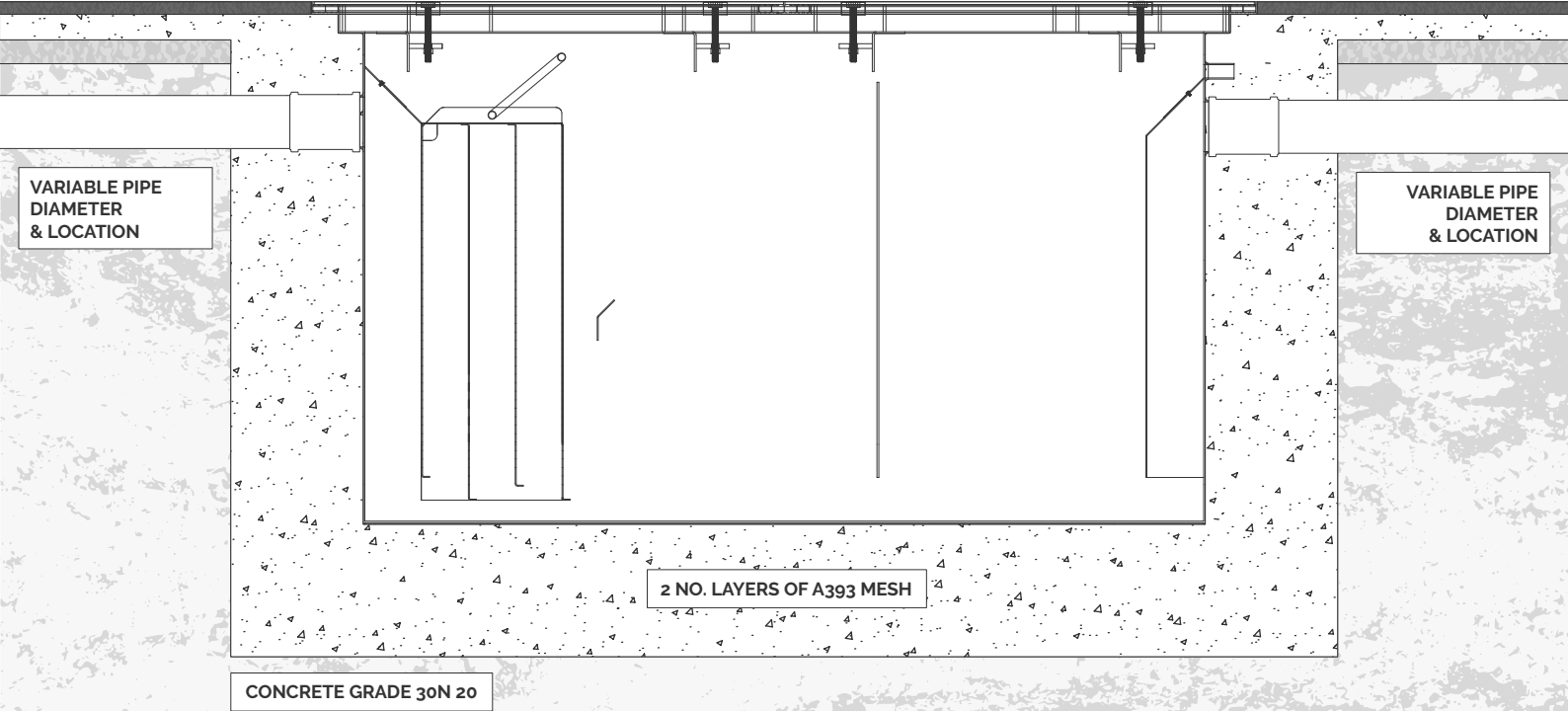
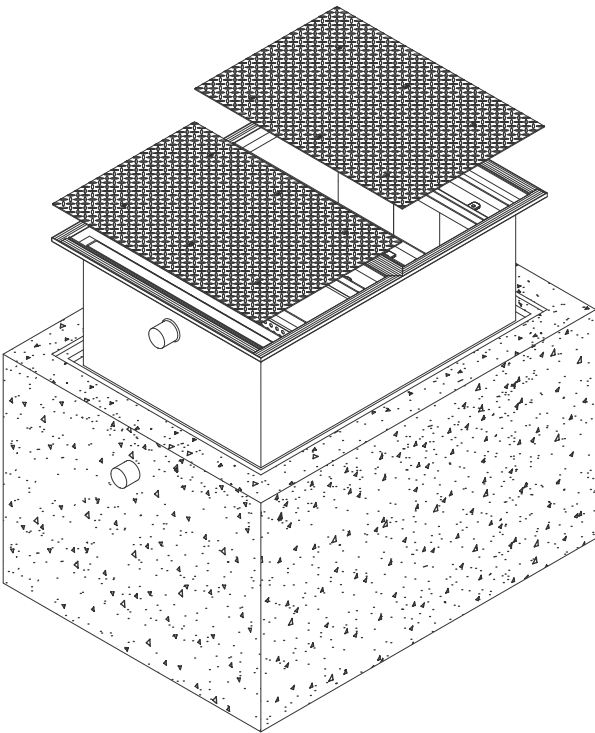
The sizing chart on page 16 - 19 provides the dimensions for our standard range of Outdoor Below Ground greasetraps with Flat Top Lids or Recessed Lids. Inlet and outlet locations can be positioned anywhere on the unit.

Current production time is 15 to 20 working days.



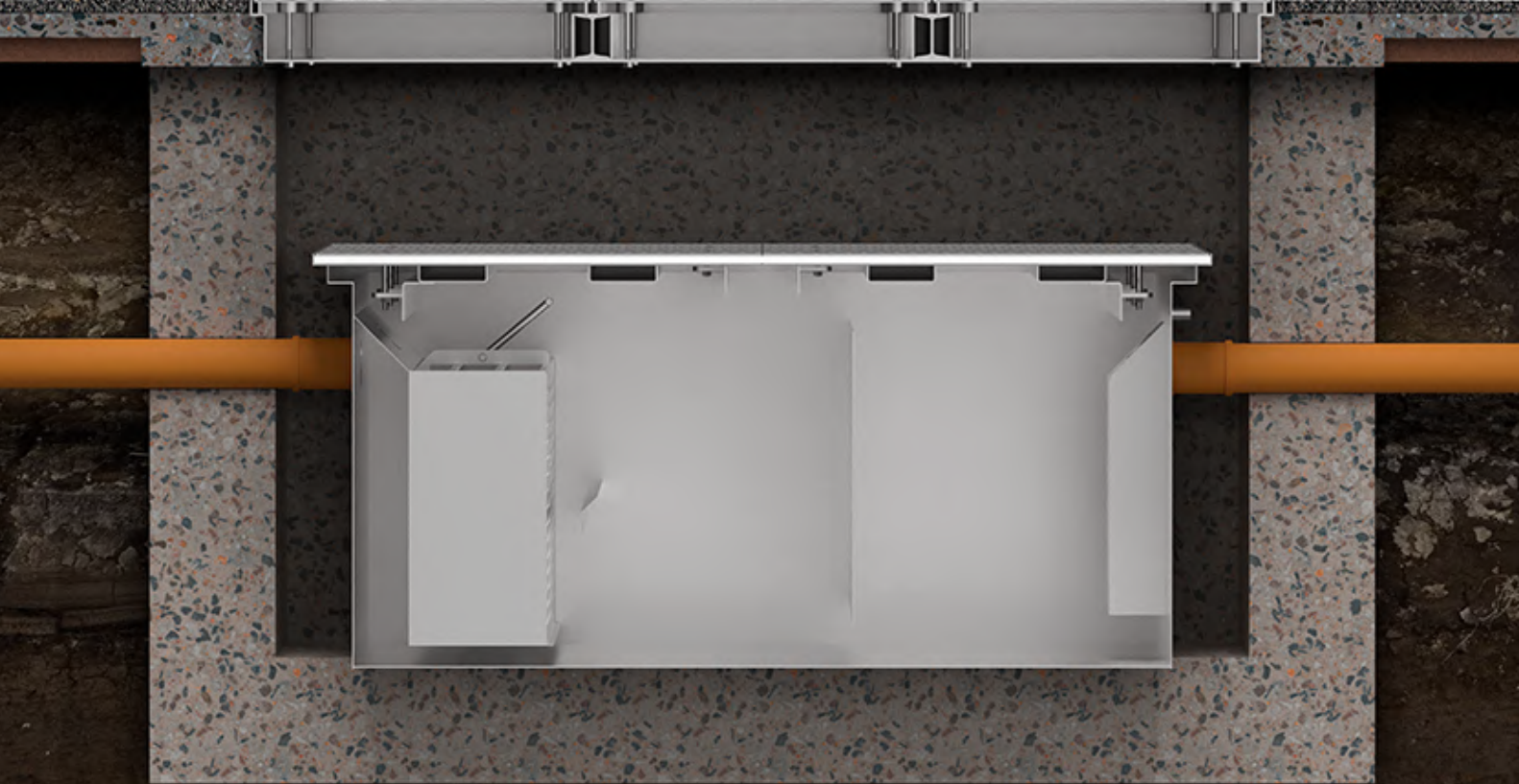
**Non-Standard Sizes**

We can fabricate a BIOTRAP® to suit almost any application. Complete the form on page 46 or call us on 0818 336633 to book a free on site consultation with one of our engineers.





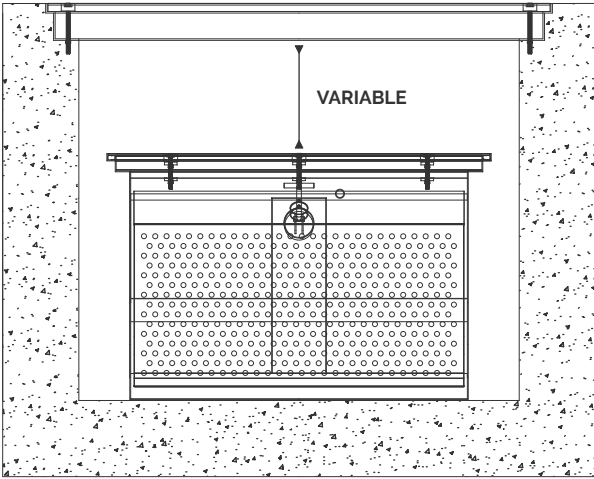
Greasetrap with Independent HGV Lid



Technical Drawings

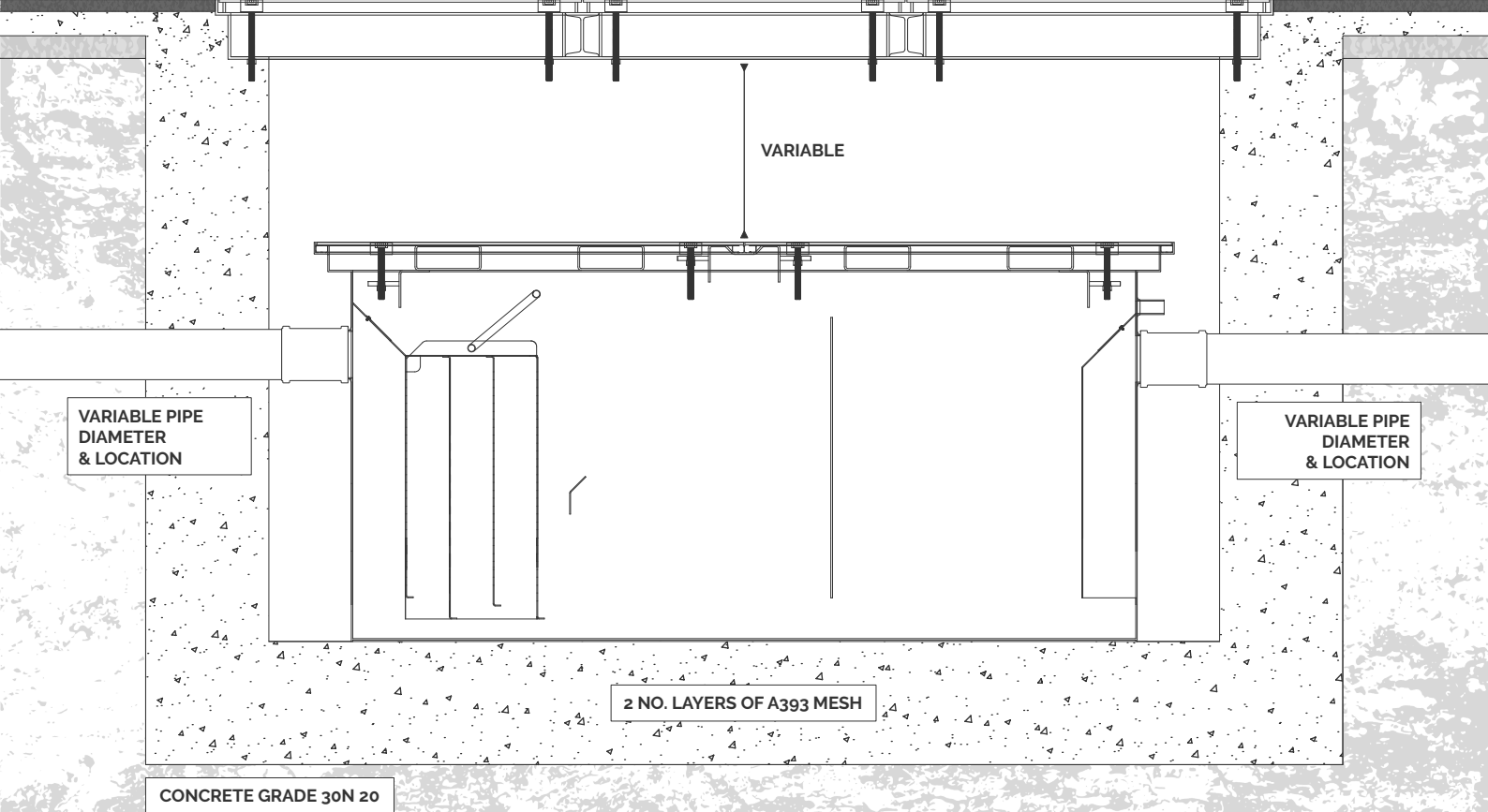
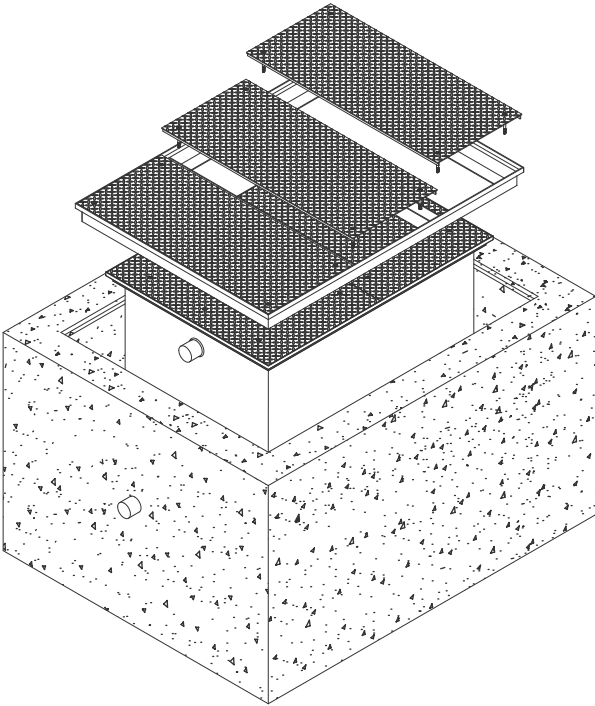
Standard Sizes

The sizing chart on page 16 - 19 provides the dimensions for our standard range of Outdoor Below Ground greasetraps with Flat Top Lids or Recessed Lids. Inlet and outlet locations can be positioned anywhere on the unit. Current production time is 15 to 20 working days.



Non-Standard Sizes

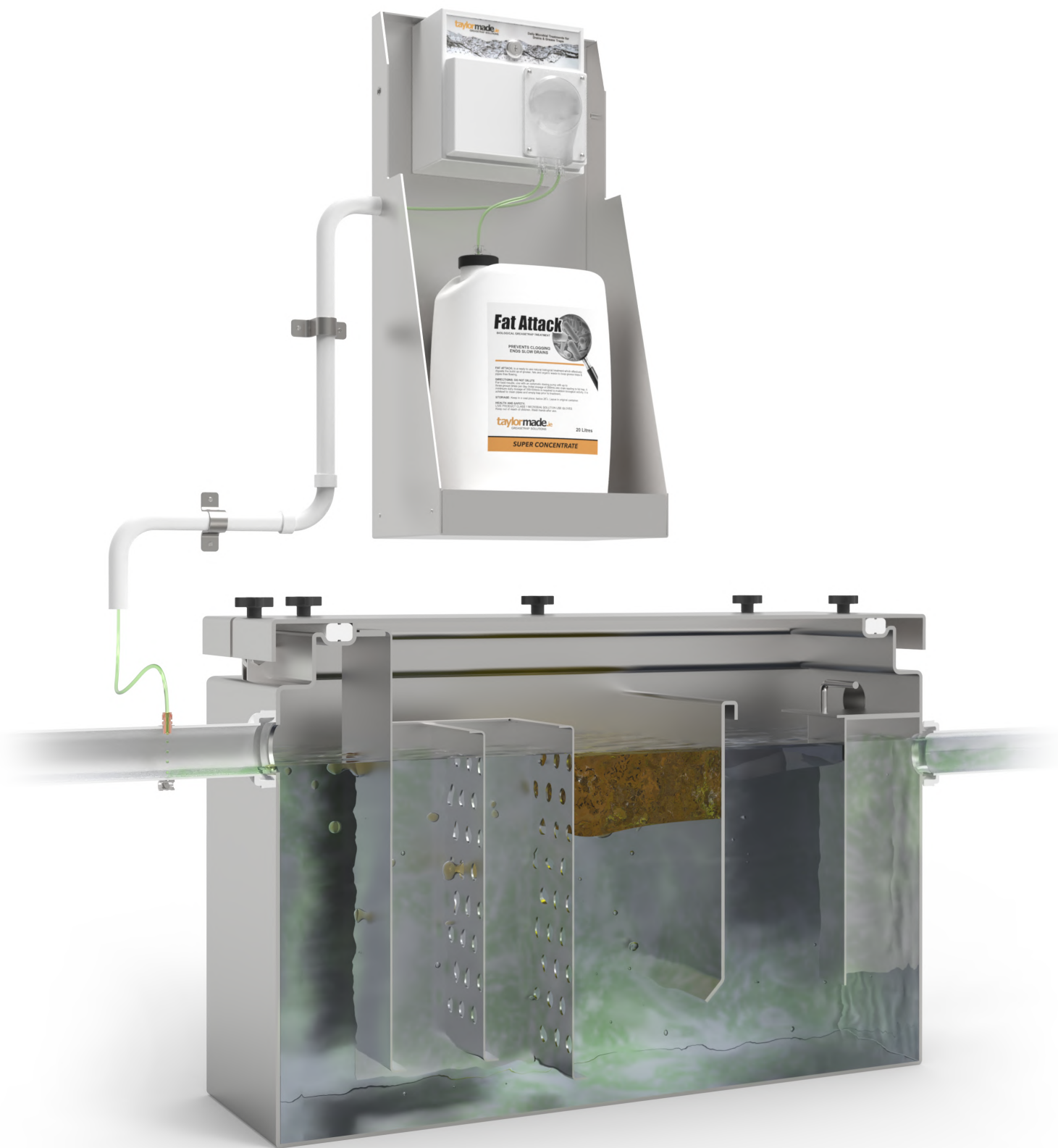
Complete the form on page 46 or call us on 0818 336633 to book a free on site consultation with one of our engineers.



Illustrated above is the OBG-9530 with an independent load class D lid for HGV's.



Fat Attack - How it Works



Powder Bacteria vs Liquid Bacteria

Powder Treatment

Fat Attack Powder and Fat Attack liquid are equally effective in producing a bio-film on the inside of pipes which is proven to keep sinks, drains, and plumbing systems working like new. Fat Attack Powder eliminates blockages, bad odours, and the need for harsh chemicals.

Each box contains 30 sachets. Use one sachet per sink, per day.

Liquid Treatment

As with Fat Attack Powder, Fat Attack liquid reduces the frequency of expensive greasetrap cleaning which justifies the cost of the treatment. Automated dosing via a digital peristaltic pump is recommended as it eliminates human error and ensures consistent, accurate, and timed dosing each day (see pages 22 & 23).

Each drum contains 10 litres which will last up to 60 days.

Bacterial Treatment vs Heat Tracing

Heat tracing uses electrical cables, insulated piping and heat sensors to reduce the viscosity of grease in pipes thereby allowing it to flow freely. When maintained correctly it can be an effective but expensive way to reduce blockages. Fat Attack liquid is a cost effective alternative to heat tracing.

A digital dosing pump delivers a consistent daily dose of Fat Attack Liquid which digests FOG (fats, oils & grease) in pipes and greasetraps. It requires little or no maintenance and consumes zero electricity.

Powder Treatment

Liquid Treatment

No Treatment

Taylormade Bacterial Treatment



## Do I Need a Maintenance Contract?

As a semi-state company under the Water Services Act 2013, Irish Water have brought the water and waste water services of Ireland's 31 Local Authorities together under one national service provider. Annual inspections (often up to 4 times per year) have already commenced and strict penalties are enforced for non-compliance.



New Greasetrap Regulations

### A Legal Requirement

Food Service Establishment's are required to demonstrate compliance with their Trade Effluent Discharge Licence and with I.S. EN 1825 parts 1 & 2. Put simply, food operators need to establish and document a comprehensive routine of maintenance, water analysis and waste disposal for each greasetrap on their premises.



Maintenance Plan

### Maintenance Plan

A Preventative Maintenance Plan for your existing or new greasetrap will eliminate blockages, bad odours and costly downtime while ensuring your premises is compliant with all Local Authority and Irish Water regulations.



Controlled & Monitored

### Controlled & Monitored

Our Maintenance Plans are tailored to the needs of each facility and include scheduled waste disposal, daily bacterial treatments, bimonthly service visits and an online compliance reporting service. All of this for one fixed monthly fee.



Customer Service

### Customer Service

0818 336633  
info@taylormade.ie  
www.taylormade.ie

### Accurate, Consistent & Actionable

Scheduled monitoring and maintenance is carried out every 30 or 60 days and all mandatory records are updated. This ensures the performance data is accurate, consistent and actionable. You and your Local Authority Inspectors can remotely access these maintenance and compliance records via MACS® (see page 24 for more details).

### What Makes Us Different?

We design, manufacture, install and maintain our own greasetraps. Why is this important?

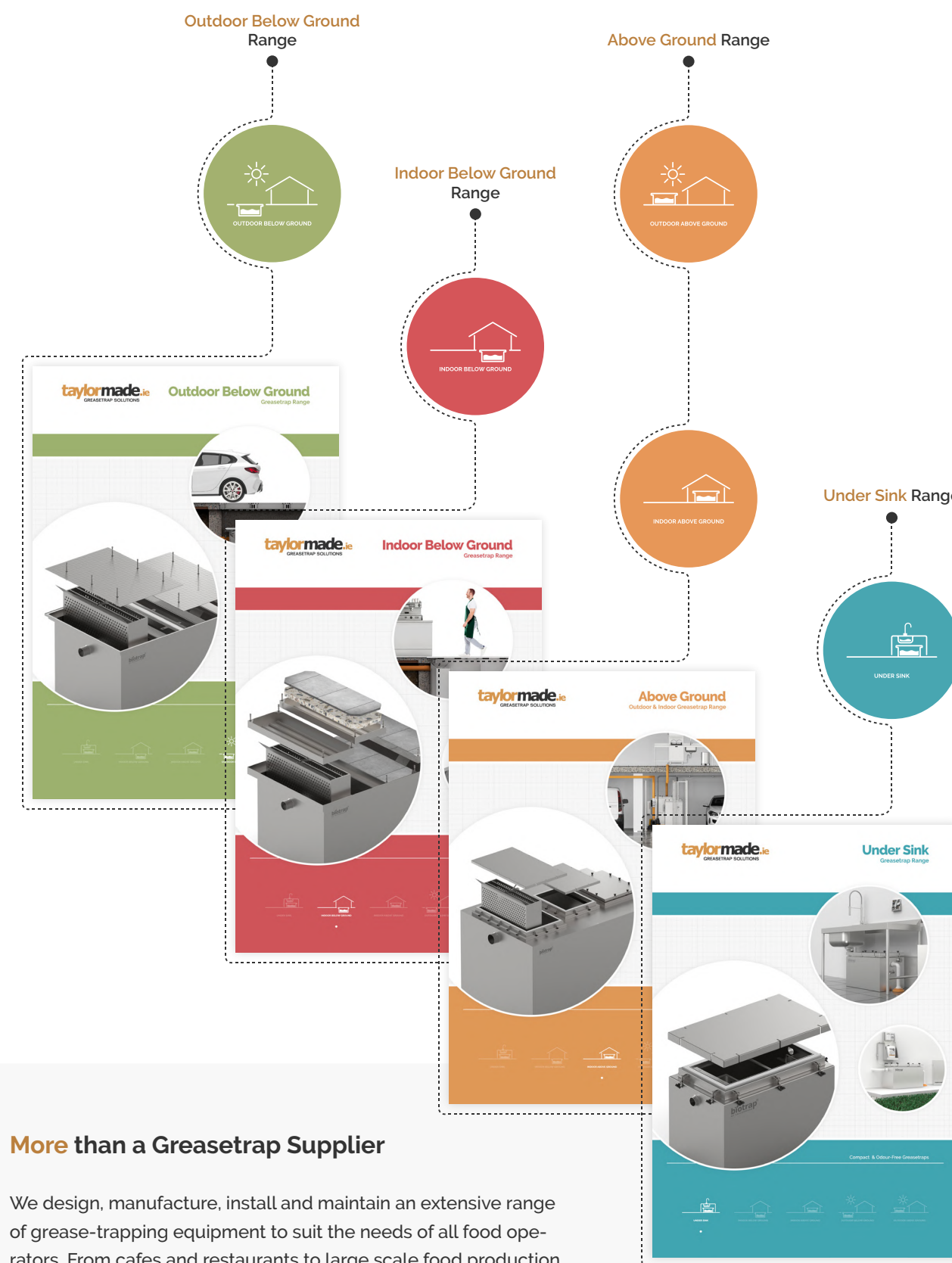
If you purchase a greasetrap from a distributor or catering supplier, use a plumbing contractor to install it and pay yet another supplier to maintain it, who do you call when there's a problem?

We take ownership of every step of the process from design and fabrication through to installation and maintenance which provides total peace of mind for our valued clients.

Maintenance Plans include all of the following for one fixed monthly fee:

- FAT ATTACK® Bacterial Treatment
- Scheduled Waste Disposal
- MACS® Compliance Reporting
- On Site Compliance Manual
- Under Sink FOOD CATCHER®
- Waste Water Analysis
- Application for Annual Discharge Licence

## Our Product Range



### More than a Greasetrap Supplier

We design, manufacture, install and maintain an extensive range of grease-trapping equipment to suit the needs of all food operators. From cafes and restaurants to large scale food production plants, we will ensure your premises complies with all industry standards allowing you to focus on your core business.

You can download our brochures at [www.taylormade.ie](http://www.taylormade.ie) or contact our sales office on 0818 336633 to schedule a free on-site consultation.



# Testimonials

## You're in Good Company

From 5 star hotels and restaurants to hospitals, nursing homes and fast food outlets, hundreds of food operators throughout Ireland are experiencing the benefits of a Taylormade BIOTRAP® and maintenance plan.



Paul Flynn

"We have used this bacterial product since 2007. It works very well. No blockages or bad odours."

– CELEBRITY CHEF, THE TANNERY

*Paul Flynn*



Enda McEvoy

"A cost effective solution. We wouldn't be without it."

– MICHELIN STAR CHEF, LOAM

*Enda McEvoy*



Michael Thomas

"We receive a professional service from Taylormade. I have no hesitation in recommending them to other food operators."

– BEST CHEF 2017, WATERFORD CASTLE

*Michael Thomas*



Paul Philips

"A simple but effective way of controlling waste, grease and ensuring compliance. A good company to deal with."

– AWARD WINNING CHEF, PEACH TREE

*Paul Philips*



Ronnie Wolf

"We replaced our mechanical grease traps with a Taylormade BIOTRAP®. We are very happy with the installation and the maintenance contract."

– HEAD CHEF, RIVERCOURT HOTEL

*Ronnie Wolf*



Gemma Murphy

"We are very happy with the product and service. Our compliance & maintenance records are always up-to-date."

– HEAD CHEF, MARYBOROUGH HOTEL

*Gemma Murphy*



Paul Power

"Very happy to recommend Taylormade to all food operators. Quality service."

– CONSULTANT CHEF

*Paul Power*



Robert Bullock

"We are delighted with our new BIOTRAP®. Taylormade provide a great product and service. Very happy to recommend to others."

– PASTRY CHEF, LE PATISSIER

*Robert Bullock*





# Made-to-Measure Greasetraps

A taylor**made** BIOTRAP® allows you to dictate the shape, design and load capacity to suit your particular requirements. For locations with limited headroom or restricted space, we can fabricate a custom-built greasetrap in several sections which are then welded together in situ and dye tested for water tightness. Complete the details below and email to **info@taylor**made**.ie** to receive a free quotation.

## Contact Details

Company Name:

Premises:

Buyers Name:

Buyers Phone:

Buyers Email:

## Equipment Details

No. of Prewash Sinks:

No. of Pot Wash Sinks:

No. of Dishwashers:

No. of Combi Ovens:

No. of Woks:

## Specify Your Greasetrap Model

Indoor Trap

Outdoor Trap

Above Ground

Below Ground

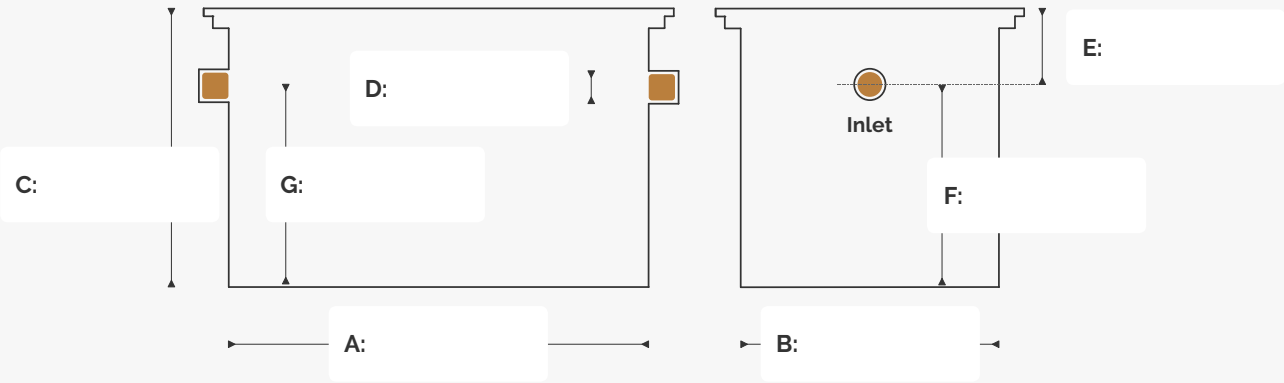
## Optional

Length of Floor Drains:

Length of Pipe to Trap:

Inlet Pipe Diameter:

Outlet Pipe Diameter:



**A = Overall Length**  
**B = Overall Width**  
**C = Overall Height** From the bottom of the trap to the top of the cover.  
**D = Inlet & Outlet Pipe Diameter** e.g. to suit 40mm, 50mm, 110mm, 160mm, 220mm or 254mm pipework.

**E = Inlet Location** From centre of inlet pipe to top of greasetrap.  
**F = Inlet Location** From bottom of the greasetrap to centre of inlet.  
**G = Outlet Location** The outlet should be a minimum of 10mm lower than the inlet.



www.taylor**made**.ie  
info@taylor**made**.ie  
0818 336633

Unit 1, The Stables, Ballygorey, Mooncoin, Co. Kilkenny, Ireland



